



**WORKBOOK
2021/2022**



**PERFORMANCE
SKIWEAR**

📷 📱 vitaliniperformanceskiwear

VIA SANT'ANTONIO, 87
23030 VALFURVA (SO) ITALY

+39 0342 945453

WORKBOOK 2021/2022



The synthesis in a logo, the identity in the name, the history of the most demanding ski slopes in the World: Vitalini is the sportswear wanted by people who, on sport, have made their choice of life, their profession and their way to be.

The graphic representation of a downhill racer, high-speed expression and control, strictly dependent on organization, programming, preparation and technical attention to detail in the choice of equipment to minimize errors: an image that encapsulates all the direct experience of Vitalini, reported all in production of clothing designed and realized by those who know well the needs in their use, combining them with the peculiarities that only those who have experienced extreme stress, first as World Cup racer and then as Ski Instructor and Coach, can elaborate and propose.

VITALINI is not like a simple trade mark but it is the name of an athlete, a man who puts himself personally in front and at the disposal of his clients, sharing his work environment and proposing his style: what allowed him to be like in the "excellence". Our goal, excellence, is a belief that he has been able to transfer to the production of sophisticated base for the new line "VITALINI PERFORMANCE SKI WEAR". A collection of technical garments and accessories that combine cuts and productions designed to maximize the freedom of movement during extreme and stressful workouts for the fabrics, all combined with optimum heating and waterproof, always guaranteeing high color resilience during long time and long using.

VITALINI's approach to customer is to give them as much as possible support, assistance and collaboration has enabled to realize and offer high quality products that have satisfying for over 12 years prestigious clubs, athletes, teams and schools all over the World.

The VITALINI proposal is complemented by an exclusive service, respect to the market, with an internal tailoring service, that, depending on the demands of the various clients, allows us to satisfy all their request, permits us to provide timely assistance and intervene on possible but often inviting working accidents like tearing, scraping, cutting, staining, and assisting clients with with a few pcs. orders.

VITALINI is a professional and passionate Team, ready at an ideal starting gate to face those trials, those that the most exiled will want to ask us.

We are ready.



Fabrics and Technologies



TORAY TOP DERMIZAX

Jackets and pants are made with high-tech Polyester fabric, coupled with Dermizax membrane, membrane water column > 20,000 mm / 24h and breathability of > 20,000g / 24h
WR water repellent: WR treatment repels and slides the water while maintaining the breathability of the fabric. It resists to numerous washes and its effectiveness is restored with the drying and the ironing of the garment, with a guaranteed seal of the spray test of 80, after 100 washes. The color is guaranteed in the seal both to the migration to the sun and to the washing with an index greater than or equal to 4.

<http://sportstextiles.toray/en/dermizax/index.html>



POLYESTER TORAY

Jackets and pants are packaged with the Polyester fabric, coupled with Dermisax membrane, membrane water column > 20,000 mm / 24h and breathability of 10,000g / 24h.

WR water repellent: WR treatment repels and slides the water while maintaining the breathability of the fabric. It resists numerous washes and its effectiveness is restored with the drying and the ironing of the garment, with a guarantee of the test spray seal of 80, after 20 washes. The color is guaranteed in the seal both to the migration to the sun and to the washing with an index greater than or equal to 4.

<http://sportstextiles.toray/en/dermizax/index.html>

| | |
|-----------------------|---|
| Waterproofness | 20,000mmHG or higher |
| Moisture Permeability | 10,000g/m ² /24 hrs. or higher (1/2-layer) |
| Water Repellency | 80 points or higher (after 20 wash cycles) |



SMILE MAJOCCHI

A new fabric dedicated to the Vitalini CLASSIC 2020/21 line,
100% Polyester, membrane water columns > 20,000 mm / 24h and 12,000g / 24h breathability.



POLILIGHT

2-layer and 1/2 fabric, lightweight, easy to store (membrane water column > 20,000 mm / 24h and breathability 20,000 g / 24h). Ideal for anti-water capes.



PRIMALOFT

Padding in water-repellent microfibre, which, thanks to the most advanced technologies, allows to obtain garments with superior thermal insulation, lightness and softness.



WINDTEX

Thanks to WINDTEX products you can make the most of and carry out outdoor activities in total comfort. These products are able to ensure comfort, heat protection in the performance of the most diverse activities and in different weather conditions. In this way, you can savour every moment of your experiences, without the unpleasant sensations of cold, damp or overheating.



CORDURA

Highly resistant fabric used in inserts subject to tearing and abrasion.



DOWN PRIMALOFT

High quality quilt that combines maximum lightness with the superior thermal capacity of the down jacket with a low percentage of feathers while guaranteeing maximum lightness and exceptional comfort.



SITIP BLIZZARD

Blizzard Thermal Control by Sitip is a highly thermal fabric, internally brushed with an ultra soft microfiber.

Blizzard Sitip guarantees excellent elasticity, excellent elastic modulus and low deformability as well as excellent breathability, high resistance to pilling and is easy to care for.



Think GREEN

Commitment to my life has always been a constant: first as an athlete and now as an entrepreneur, I go all my efforts to IMPROVE SPORTS TECHNICAL CLOTHING thinking above all to the youth world.

Recent advances in the field of material technology have made it possible to make substantial improvements to sports technicians, making them more powerful and durable.

Pongo Extreme ATTENTION TO CHOOSING MATERIALS: It is not only a question of comfort or technicality, breathability, thermality, waterproofness, it is above all control of the path made by each single component of the product to ensure a HIGH LEVEL CAPO, free of allergens and toxic substances, AND ETHICS, respectful of the dignity and health of those who work.

The Vitalini Performance Skiwear leaders have received CERTIFICATION of suitability for both outer fabrics such as OEKO-TEX and Standard 100, and for inner, synthetic and goose feather padding, such as EDFA.

CARE OF DETAIL and WARNING TO SECURITY are the cornerstones of my research: along with my team we have studied solutions that eliminate inadequate accessories, such as elastic bandage or hoods, sometimes dangerous to the user.

My commitment goes beyond the finished product, it goes to the ethical and human sphere, to communicate through the garments to which I have given my name the love and passion that I have always cultivated for skiing, a clean and healthy sport, like the mountain and the Vitalini brand.



OEKO-TEX®



Company Info

VITALINI PERFORMANCE SKIWEAR is a brand of SKIXO srl
Via S. Antonio, 87 - 23030 Valfurva, So - Italia

C.F./P.IVA 00770710143

TEL +39 0342 945453

ITALIA: info@pietrovitalini.com
EXPORT: export@pietrovitalini.com

ORGANIZATION CHART

CEO

Pietro Vitalini

PRODUCTION

Marco Vitalini

EXPORT

Stefano Cassin
s.cassin@pietrovitalini.com

ITALY

Andrea Galli
a.galli@pietrovitalini.com

SECRETARY

Paola Manciana
segreteria@pietrovitalini.com

AMMINISTRATION

Alex Andreola
amministrazione@pietrovitalini.com

DESIGN

Alessia Gurini
grafica@pietrovitalini.com

JACKET

 Vp 6653

LOGOS NOT INCLUDED
IN THE PRICE QUOTATION

THE COLORS IN THE
VIDEO AND TO PAPER ARE
DIFFERENT FROM REALITY






INSULATION:



170 grams: on the body
80 grams: in the arms

Sizes :

size table:

-  woman: 38 - 40 - 42 - 44 - 46 - 48 - 50
-  unisex: XS - S - M - L - XL - XXL - XXXL
-  child: 4a - 6a - 8a - 10a - 12a - 14a

FEATURES:

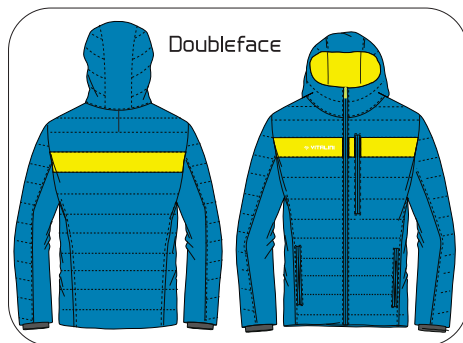
- Quilted jacket with down-alternative fill
- Internal powder skirt
- Articulated elbow
- Fleece inner collar
- Inverted zipper to keep out wind
- Lycra wristbands
- Cellphone pocket
- Ski pass pocket
- One chest pocket
- Two waist pockets
- Two internal mesh pockets
- Side vents (only men's and women's
- Chest pocket with shield for telephone and radio

OPTIONS:

- Second chest pocket on left side (**10,00€ + tax** , minimum 10 pieces)
- Roomy exterior pocket located on rear right side (**10,00€ + tax** , minimum 10 pieces)
- Insulation 80g throughout body
- -NO PRIMALOFT
- all print fabric part 3(**20,00€ + tax**)
- part colour variation (=**> 10,00€ + tax** , minimum 10 pieces)

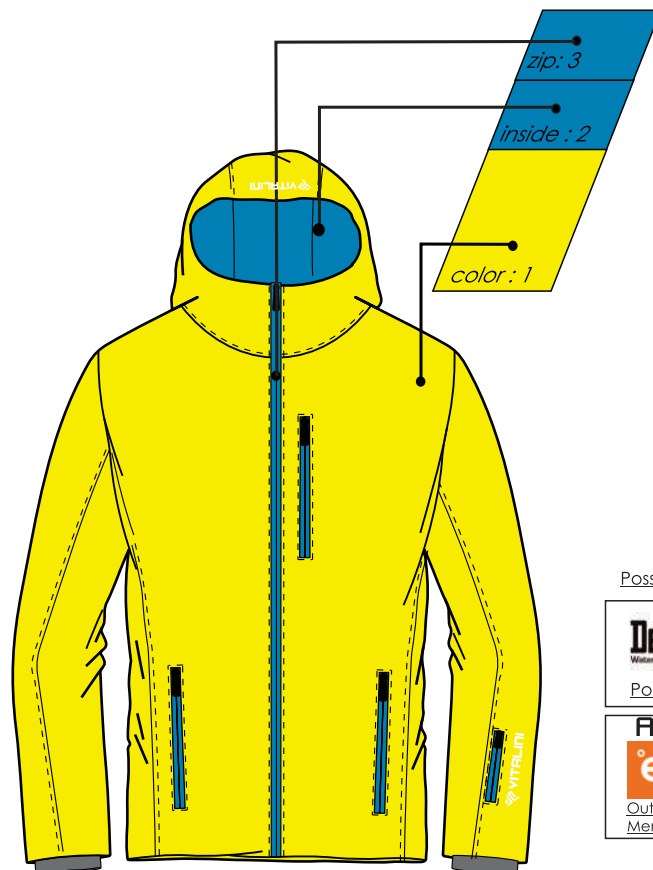
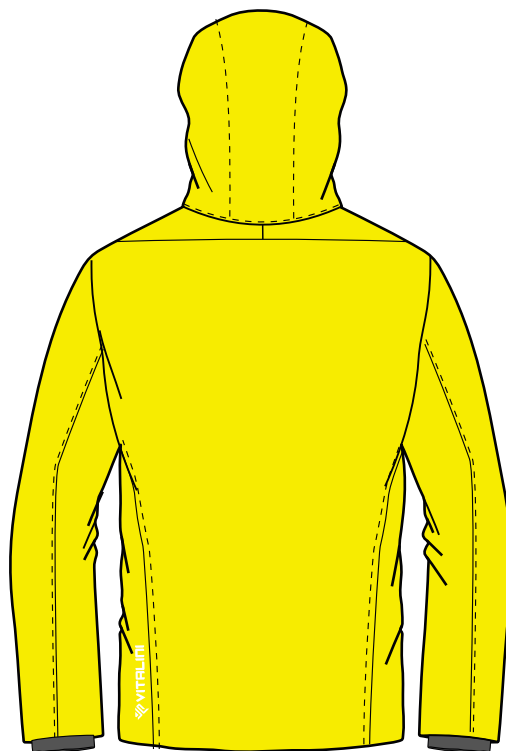
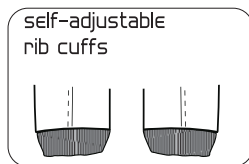
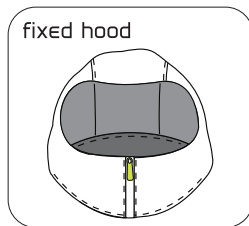
JACKET

 Vp 655



LOGOS NOT INCLUDED
IN THE PRICE QUOTATION

THE COLORS IN THE
VIDEO AND TO PAPER ARE
DIFFERENT FROM REALITY



Possible textile



Polyester Toray






INSULATION:



100 grams

Sizes :

size table:

-  woman: 38 - 40 - 42 - 44 - 46 - 48 - 50
-  unisex: XS - S - M - L - XL - XXL - XXXL
-  child: 4a - 6a - 8a - 10a - 12a - 14a

FEATURES:

- Fully heat-sealed
- Fully Lined
- 2 pockets on the sides
- 1 chest pocket
- 1 ski pass pocket
- Inverted Zipper to keep wind out
- doubleface (zippered chest pocket, two side pockets with zip)
- fixed hood
- self-adjustable rib cuffs
- Chest pocket with shield for telephone and radio

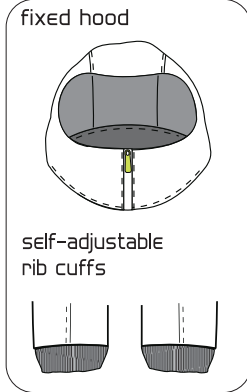
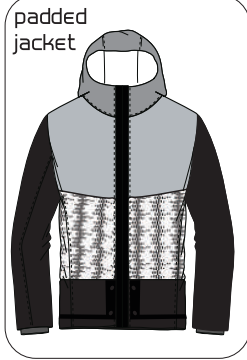
OPTIONS:

- outside fabric «Print on Shape» (see pricelist)
- NO PRIMALOFT

JACKET

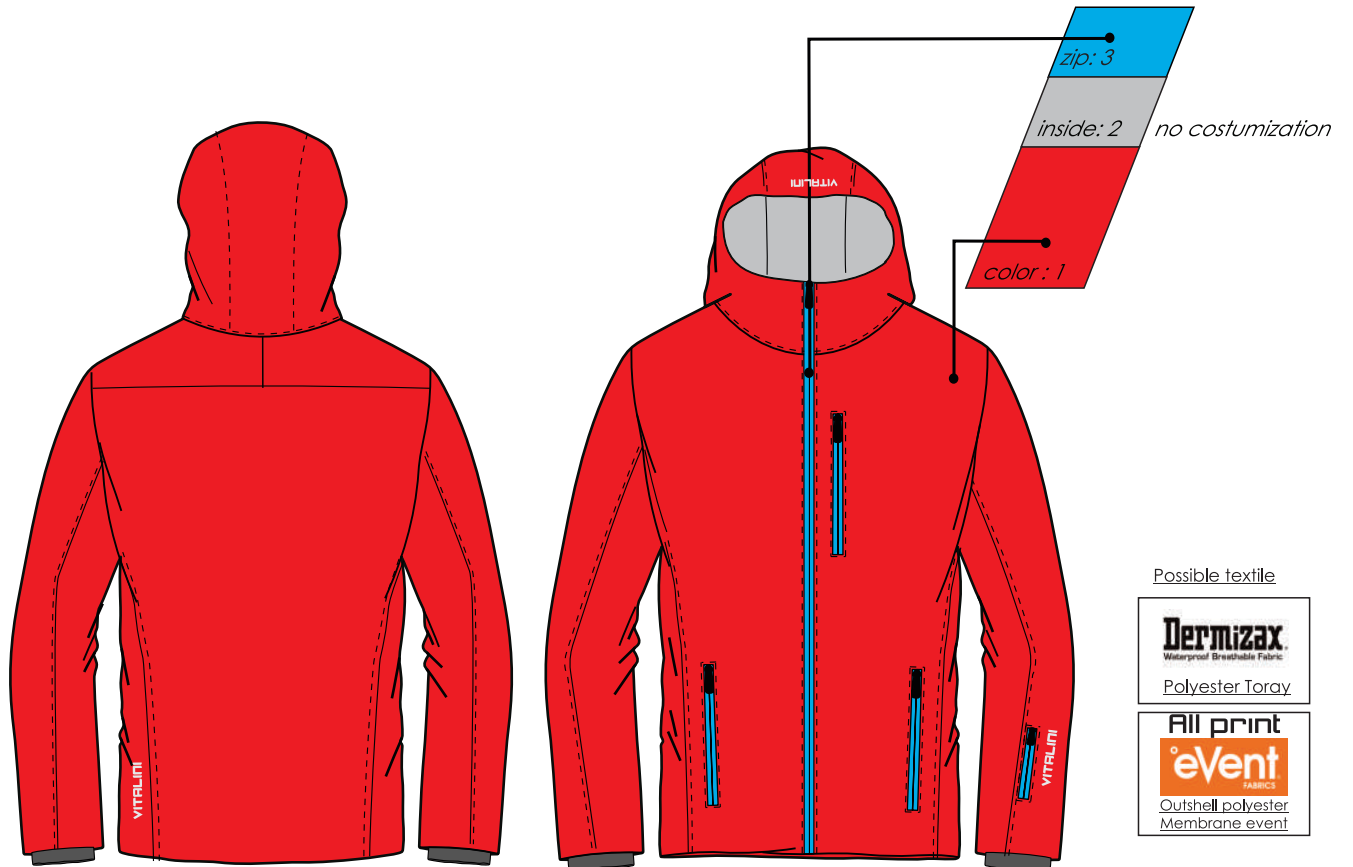

 Vp 8655



Choose your accessories



LOGOS NOT INCLUDED
IN THE PRICE QUOTATION

THE COLORS IN THE
VIDEO AND TO PAPER ARE
DIFFERENT FROM REALITY



- Possible textile
- 
Dermizax
Waterproof Breathable Fabric
 - Polyester Toray
 - 
All print
eVent
FABRICS
 - Outshell polyester
Membrane eVent




INSULATION:



100 grams

Sizes :

size table:

-  woman: 38 - 40 - 42 - 44 - 46 - 48 - 50
-  unisex: XXS - XS - S - M - L - XL - XXL - XXXL
-  child: 4a - 6a - 8a - 10a - 12a - 14a

FEATURES:

- Fully heat-sealed
- Fully Lined
- 2 pockets on the sides
- 1 chest pocket
- 1 ski pass pocket
- Inverted Zipper to keep wind out
- snow thrower
- inside chest pocket
- large internal pockets in mesh
- Chest pocket with shield for telephone and radio

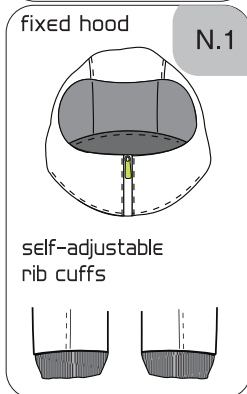
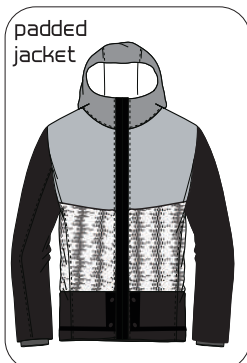
OPTIONS:

- outside fabric «Print on Shape» (see pricelist)
- NO PRIMALOFT

JACKET

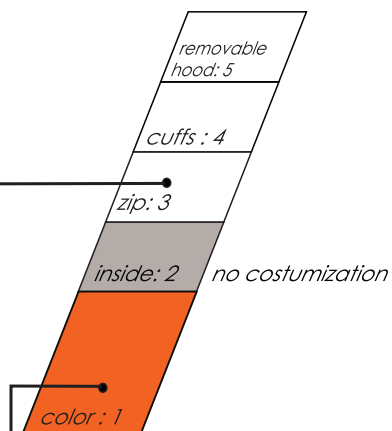


Vp 8665
LONG JACKET

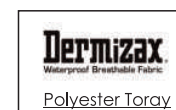


LOGOS NOT INCLUDED
IN THE PRICE QUOTATION

THE COLORS IN THE
VIDEO AND TO PAPER ARE
DIFFERENT FROM REALITY



Possible textile



Polyester Toray



INSULATION:



100 grams

Sizes :

size table:



woman: 38 - 40 - 42 - 44 - 46 - 48 - 50



unisex: XS - S - M - L - XL - XXL - XXXL



child: 4a - 6a - 8a - 10a - 12a - 14a

FEATURES:

- Fully heat-sealed
- Fully Lined
- 2 pockets on the sides
- 1 chest pocket
- 1 ski pass pocket
- Inverted Zipper to keep wind out
- snow thrower
- inside chest pocket
- large internal pockets in mesh
- Chest pocket with shield for telephone and radio

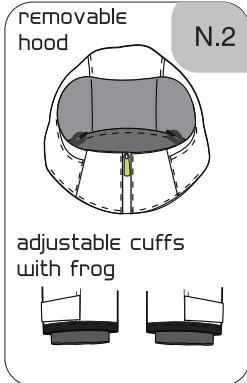
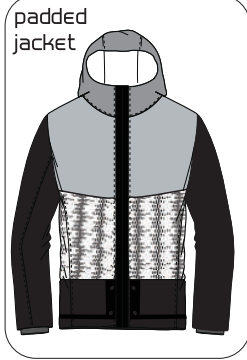
OPTIONS:

- outside fabric «Print on Shape» (see pricelist)
- NO PRIMALOFT

JACKET

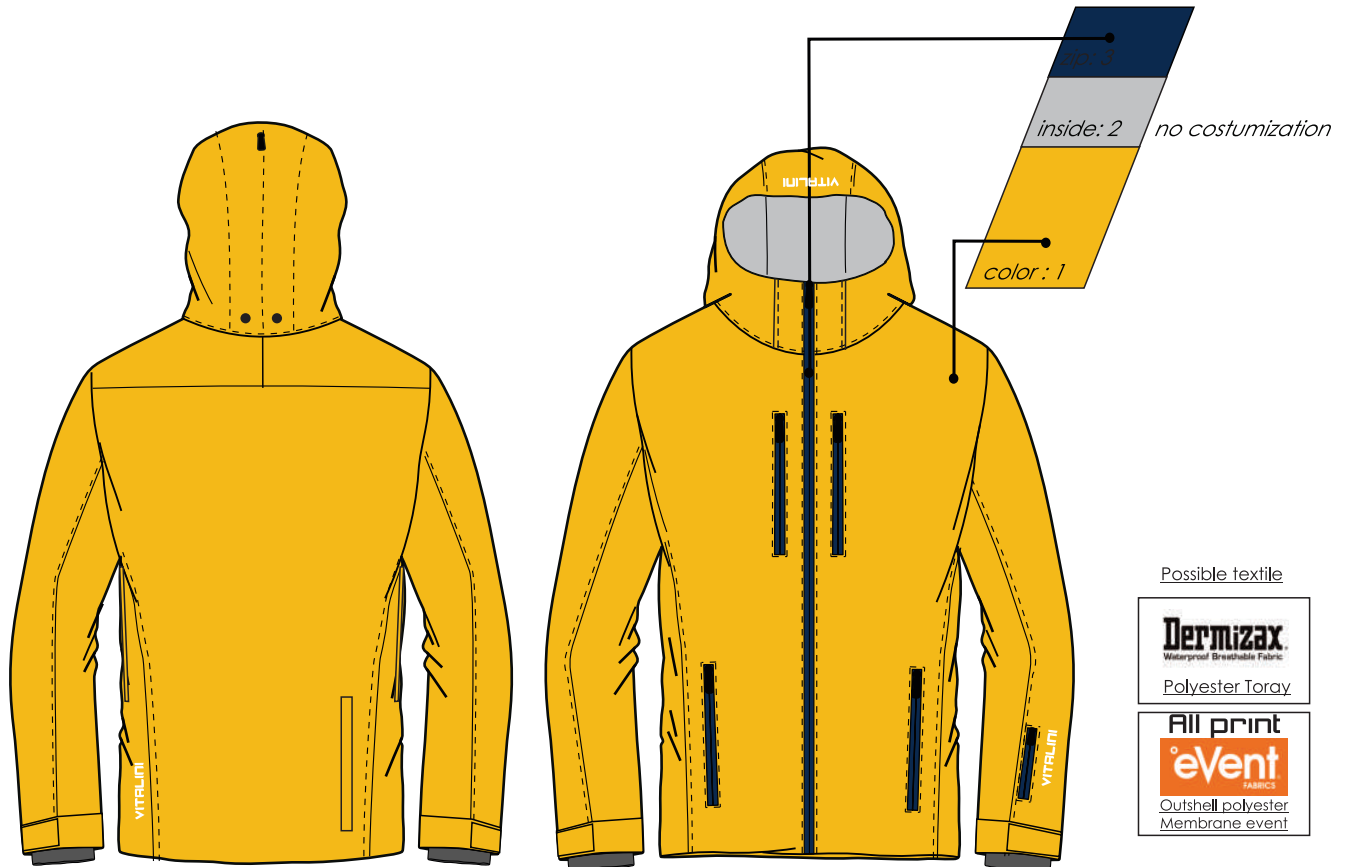

 Vp 9655

Choose your accessories



LOGOS NOT INCLUDED
IN THE PRICE QUOTATION

THE COLORS IN THE
VIDEO AND TO PAPER ARE
DIFFERENT FROM REALITY



Possible textile

Dermizax
Waterproof Breathable Fabric
 Polyester Toray

All print
eVent
FABRICS
 Outshell polyester
 Membrane event




INSULATION:



100 grams

Sizes :

size table:

-  woman: 38 - 40 - 42 - 44 - 46 - 48 - 50
-  unisex: XS - S - M - L - XL - XXL - XXXL
-  child: 4a - 6a - 8a - 10a - 12a - 14a

FEATURES:

- Completely heat-sealed
- Breathable lining
- 2 side pockets
- 1 ski pass pocket
- flash upside down to guarantee wind resistance
- snow skirt
- internal chest pocket
- Chest pocket with shield for telephone and radio
- detachable hood
- adjustable cuffs with frog
- flank ventilation
- right side back pocket

OPTIONS:

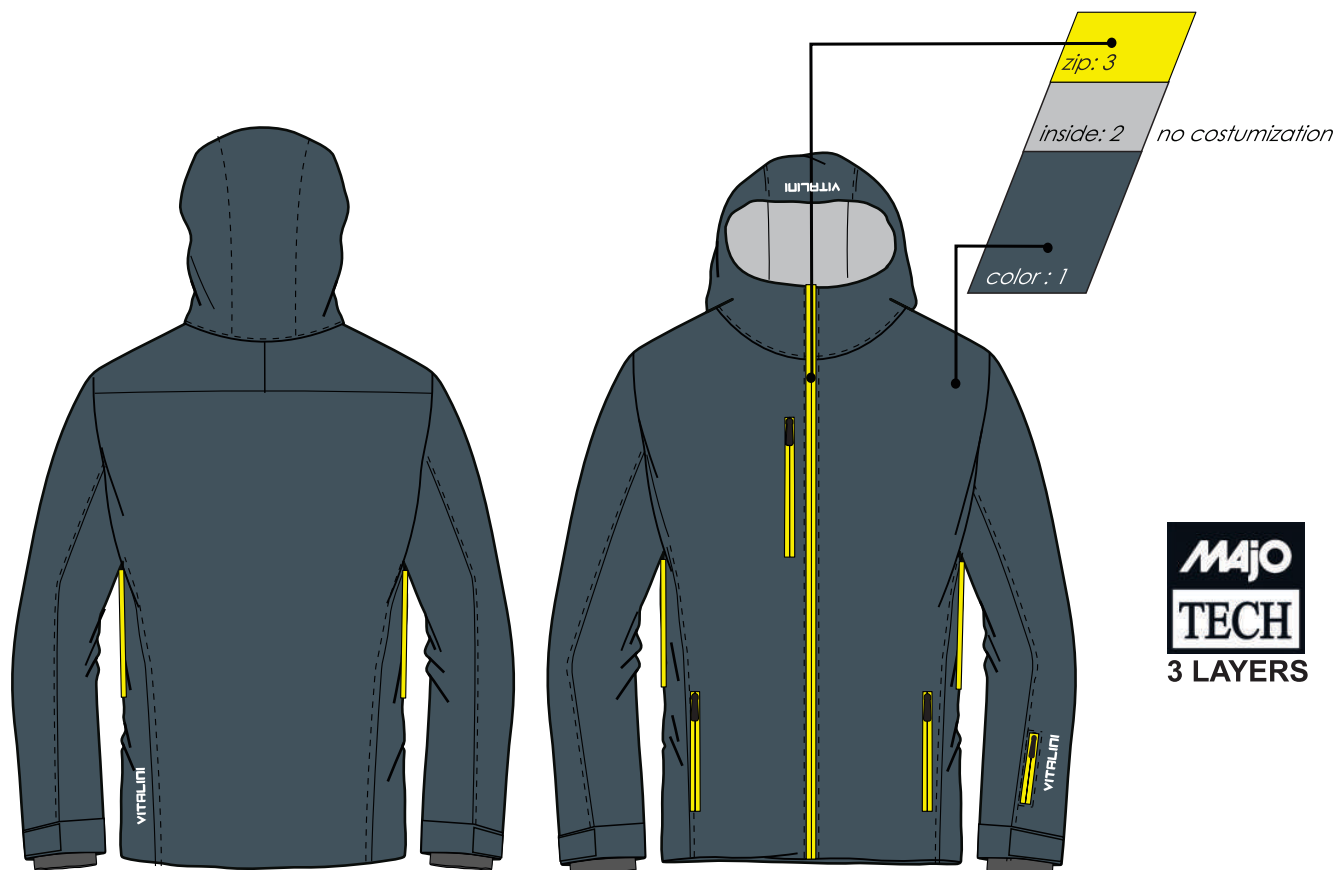
- outside fabric «Print on Shape» (see pricelist)
- NO PRIMALOFT

JACKET



Vp 9658
3 LAYERS JACKET

THE COLORS IN THE
VIDEO AND TO PAPER ARE
DIFFERENT FROM REALITY






Majo
TECH
3 LAYERS

3 LAYERS
No insulation

Sizes :

size table:

-  woman: 38 - 40 - 42 - 44 - 46 - 48 - 50
-  unisex: XS - S - M - L - XL - XXL - XXXL
-  child: 4a - 6a - 8a - 10a - 12a - 14a

FEATURES:

- Fully heat-sealed
- Fully Lined
- 2 pockets on the sides
- 1 chest pocket
- 1 ski pass pocket
- Inverted Zipper to keep wind out
- Available only in print on shape
- Chest pocket with shield for telephone and radio
- detachable hood
- adjustable cuff with velcro
- DX chest internal pocket
- 4 cargo pockets
- ZIP ventilation

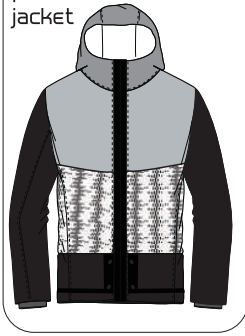
OPTIONS:

JACKET


 Vp 9659

Choose your accessories

padded jacket

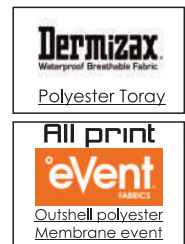


LOGOS NOT INCLUDED
IN THE PRICE QUOTATION

THE COLORS IN THE
VIDEO AND TO PAPER ARE
DIFFERENT FROM REALITY



possible fabrics:






INSULATION:



100 grams

Sizes :

size table:

-  woman: 38 - 40 - 42 - 44 - 46 - 48 - 50
-  unisex: XS - S - M - L - XL - XXL - XXXL
-  child: 4a - 6a - 8a - 10a - 12a - 14a

FEATURES:

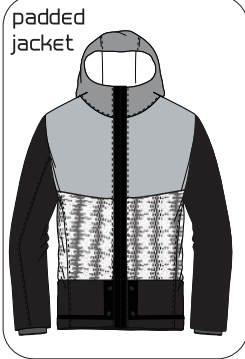
- Fully heat sealed
- Breathable lining
- 2 hip pockets
- 2 chest pocket with invisible zippers
- 1 ski pass pocket
- snow gaiter
- internal chest pocket
- expandable AND removable hood

OPTIONS:

- Primaloft 130g

JACKET

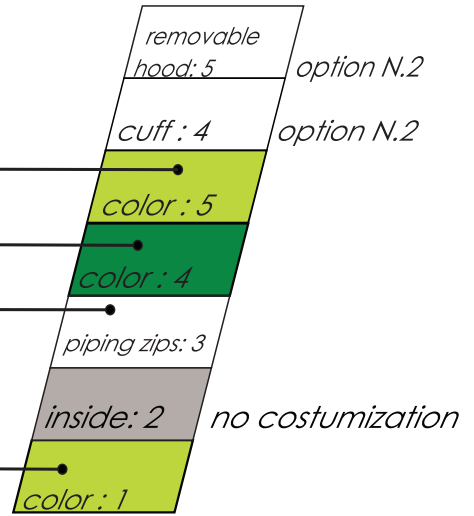
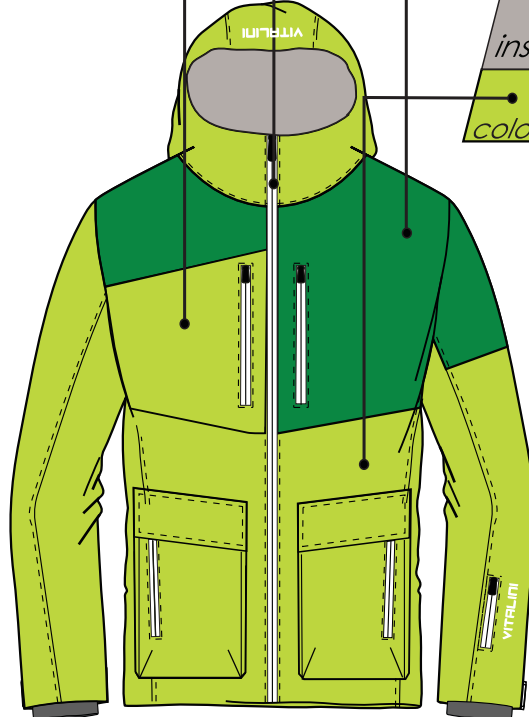
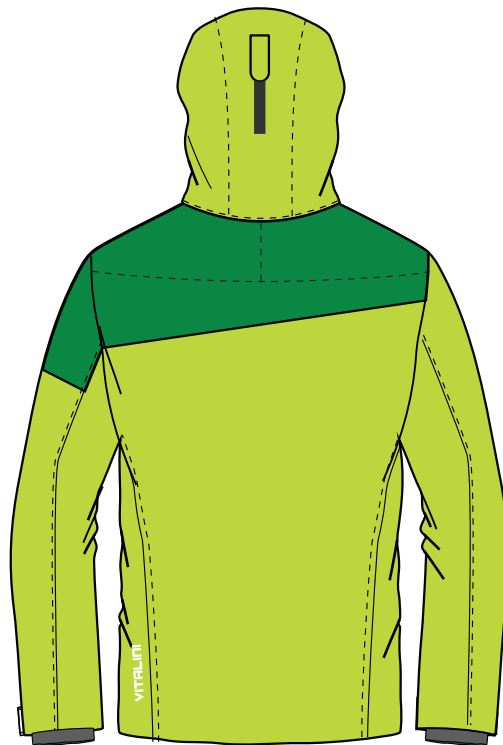
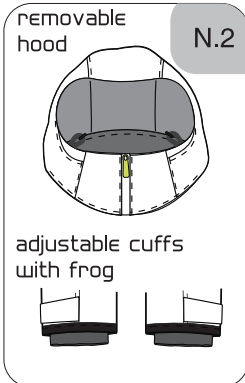
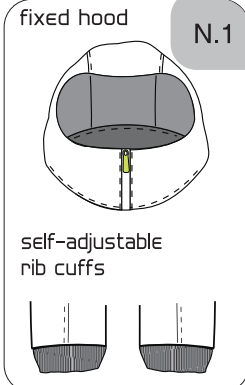

 Vp 8668



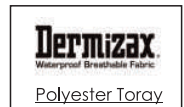
LOGOS NOT INCLUDED
IN THE PRICE QUOTATION

THE COLORS IN THE
VIDEO AND TO PAPER ARE
DIFFERENT FROM REALITY

Choose your option:



possible texture



Polyester Toray






INSULATION:



100 grams

Sizes :

size table:

-  woman: 38 - 40 - 42 - 44 - 46 - 48 - 50
-  unisex: XS - S - M - L - XL - XXL - XXXL
-  child: 4a - 6a - 8a - 10a - 12a - 14a

FEATURES:

- Fully heat-sealed
- Fully Lined
- 2 pockets on the sides
- 2 chest pocket
- 1 ski pass pocket
- Inverted Zipper to keep wind out
- snow thrower
- inside chest pocket
- large internal pockets in mesh
- 2 cargo pockets
- Chest pocket with shield for telephone and radio

OPTIONS:

- removable hood and adjustable cuffs (30,00€ + tax , minimum 10 pieces)
- texture «Print on Shape» (see pricelist)
- NO CARGO POCKETS
- NO PRIMALOFT

JACKET

 Vp 9661

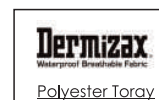


LOGOS NOT INCLUDED
IN THE PRICE QUOTATION

THE COLORS IN THE
VIDEO AND TO PAPER ARE
DIFFERENT FROM REALITY



Possible texture






INSULATION:



Sizes:

size table:

-  woman: 38 - 40 - 42 - 44 - 46 - 48 - 50
-  man: XS - S - M - L - XL - XXL - XXXL
-  child: 4a - 6a - 8a - 10a - 12a - 14a
(Only Dermizax)

FEATURES:

- Fully heat sealed
- Breathable lining
- 2 hip pockets
- 2 chest pocket
- 1 ski pass pocket
- reverse zippers to ensure wind resistance
- snow gaiter
- internal chest pocket
- detachable hood
- Adjustable cuffs with velcro
- side ventilation
- right side back pocket
- stretch fabric (adult only)

OPTIONS:

JACKET

 Vp 669

LOGOS NOT INCLUDED
IN THE PRICE QUOTATION

THE COLORS IN THE
VIDEO AND TO PAPER ARE
DIFFERENT FROM REALITY





INSULATION:



100 grams: on the body
80 grams: in the arms
160 grams: quilted area

Sizes :

size table:

 woman: 38 - 40 - 42 - 44 - 46 - 48 - 50
 unisex: XS - S - M - L - XL - XXL - XXXL

FEATURES:

- partially heat-taped
- Internal powder skirt
- Articulated elbow
- Fleece inner collar
- Removable hood
- Inverted zipper to keep out wind
- Lycra wristbands
- Stretch lining
- Cellphone pocket
- Ski pass pocket
- Pocket for telephone outside
- A pocket under the rib on the chest
- Chest pocket inside jacket with zipper
- Two pockets to the waist
- Two internal mesh pockets
- Side ventilation with invisible hinges
- Drawstring bottom hem
- Back pocket on the right side
- Chest pocket with shield for telephone and radio

OPTIONS:

- Insulation 80g throughout body
- NO insulation
- all print fabric (see pricelist)
- fabric performer stretch (see pricelist)
- Oblique zip cover (color part 4)
- only part 2 in all print (20,00€ + tax)

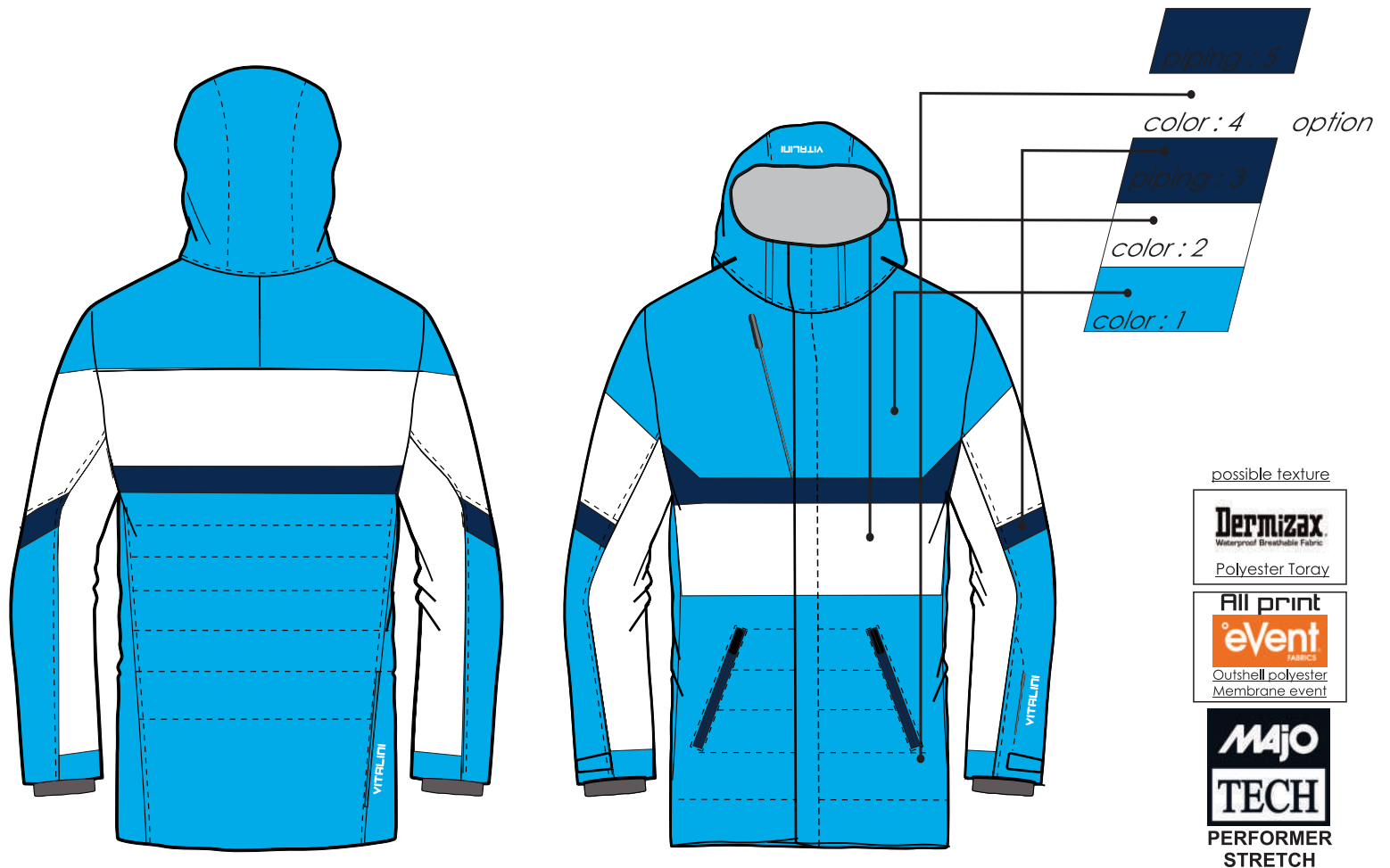
JACKET



Vp 670 LONG JACKET

LOGOS NOT INCLUDED
IN THE PRICE QUOTATION

THE COLORS IN THE
VIDEO AND TO PAPER ARE
DIFFERENT FROM REALITY



INSULATION:



100 grams: on the body
80 grams: in the arms
160 grams: quilted area

Sizes :

size table:



woman: 38 - 40 - 42 - 44 - 46 - 48 - 50

unisex: XS - S - M - L - XL - XXL - XXXL

FEATURES:

- partially heat-taped
- Internal powder skirt
- Articulated elbow
- Fleece inner collar
- Removable hood
- Inverted zipper to keep out wind
- Lycra wristbands
- Stretch lining
- Cellphone pocket
- Ski pass pocket
- Pocket for telephone outside
- A pocket under the rib on the chest
- Chest pocket inside jacket with zipper
- Two pockets to the waist
- Two internal mesh pockets
- Side ventilation with invisible hinges
- Drawstring bottom hem
- Back pocket on the right side
- Chest pocket with shield for telephone and radio

OPTIONS:

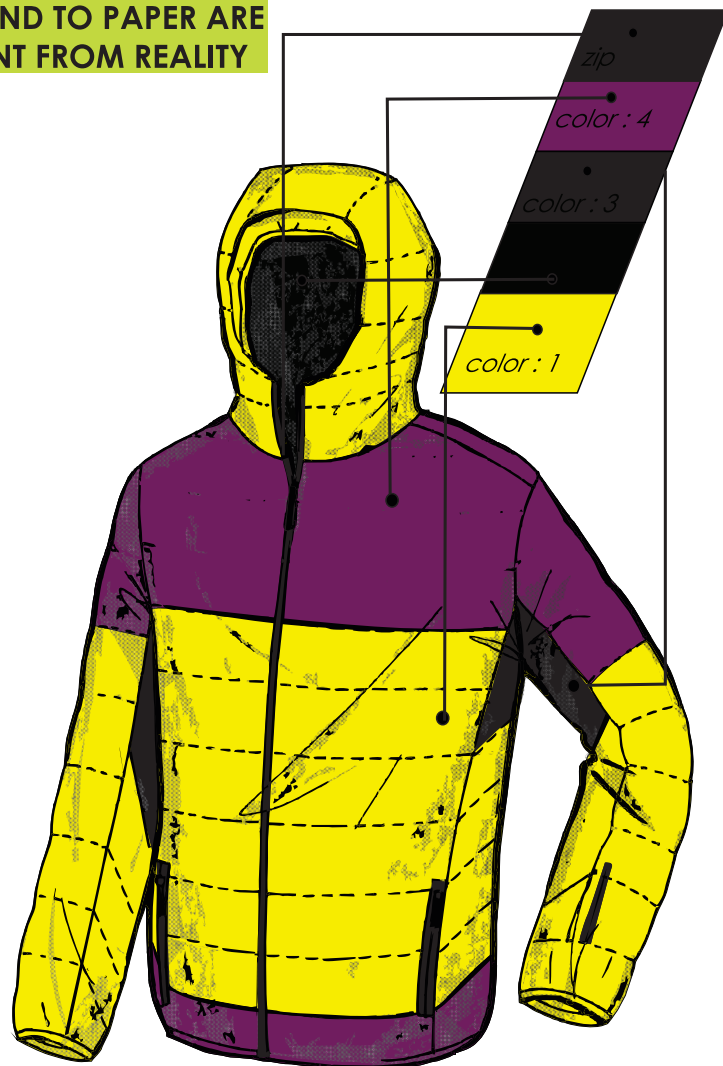
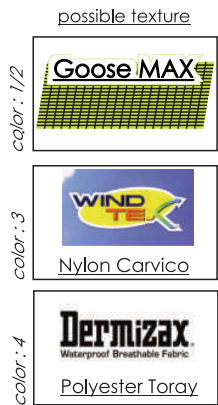
- Insulation 80g throughout body
- NO insulation
- all print fabric (see pricelist)
- fabric performer stretch (see pricelist)
- Oblique zip cover (color part 4)
- only part 2 in all print (20,00€ + tax)

GOOSE JACKET

 Vp 6100

LOGOS NOT INCLUDED
IN THE PRICE QUOTATION

THE COLORS IN THE
VIDEO AND TO PAPER ARE
DIFFERENT FROM REALITY






INSULATION:



- Feather 220 gr
- 90/10 body feather

Sizes :

size table:

-  woman: 38 - 40 - 42 - 44 - 46 - 48 - 50
-  unisex: S - M - L - XL - XXL - XXXL
-  child: 12a - 14a

FEATURES:

- Insulated Jacket
- One internal mesh pocket
- Two side pockets
- Ski pass pocket
- Two internal pockets
- drawstring at the bottom of the jacket
- DX chest internal pocket
- dermisax low flat zip cover
- high zip cover for garage
- dermisax internal zip cover flap

OPTIONS:

- all print fabric(see pricelist)
- only part 1 (central body and external hood) in all print fabric (10,00€ + tax)

RAIN JACKET



LOGOS NOT INCLUDED
IN THE PRICE QUOTATION

THE COLORS IN THE
VIDEO AND TO PAPER ARE
DIFFERENT FROM REALITY



Sizes :

size table:



10a - XXS - XS - S - M - L - XL - XXL

FEATURES:

- Fully heat-sealed
- Two pockets to life
- Foldable to get two different lengths
- Draw on life
- Rain jacket pocket holder

OPTIONS:

ONE-Piece



Vp 400

THE COLORS IN THE VIDEO AND TO PAPER ARE DIFFERENT FROM REALITY



possible texture



Taglie :

size table:



unisex: XS - S - M - L - XL - XXL - XXXL

FEATURES:

- Completely heat-sealed
- 2 side pockets
- 2 chest pocket
- Ski pass pocket
- Inverted Zipper to keep wind out
- Internal chest pocket
- 3 layers - not stuffed
- internal loops for belt and hooking separate suspenders
- 2 thigh pockets
- Die-cast hinges
- Snow gaiter

OPTIONS:

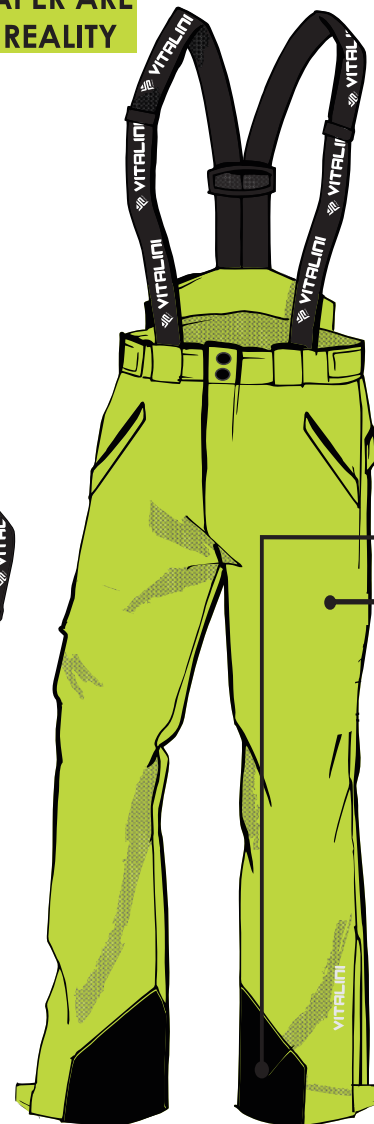
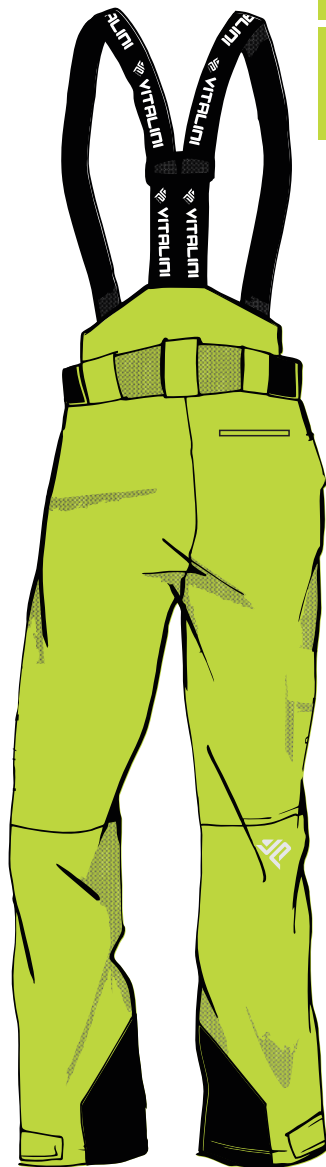
- Additional suspenders (€ 15,00)

PANT

 Vp 643
SIDE ZIP

LOGOS NOT INCLUDED
IN THE PRICE QUOTATION

THE COLORS IN THE
VIDEO AND TO PAPER ARE
DIFFERENT FROM REALITY



possible texture



Polyester Toray






INSULATION:



80 grams

Sizes :

size table:

-  woman: 38 - 40 - 42 - 44 - 46 - 48 - 50 (+/-5cm)
-  unisex: XS - S - M - L - XL - XXL - XXXL (+/-5cm)
-  child: 4a - 6a - 8a - 10a - 12a - 14a (+/-5cm)

FEATURES:

- Fully seam-sealed
- Breathable Taffeta nylon lining
- Removable suspenders
- Cordura reinforced lower pant area
- Built-in ankle gaiter to keep snow out
- Articulated knee
- Adjustable waistband
- Two side pockets
- One rear pocket
- Full length side zippers

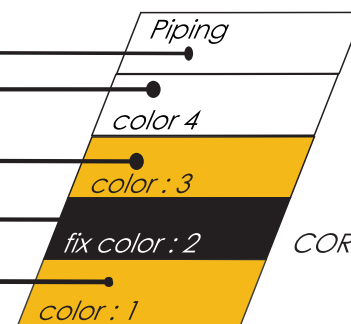
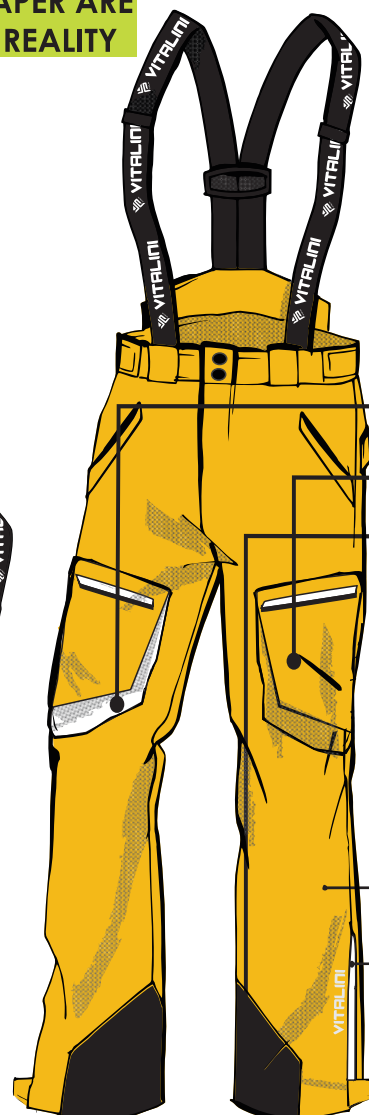
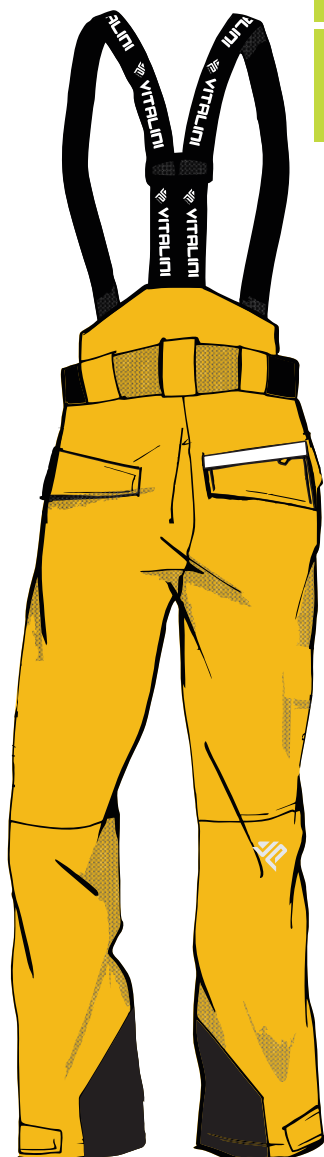
OPTIONS:

PANT



LOGOS NOT INCLUDED
IN THE PRICE QUOTATION

THE COLORS IN THE
VIDEO AND TO PAPER ARE
DIFFERENT FROM REALITY



possible texture



Polyester Toray



INSULATION:



80 grams

Sizes :

size table:

- woman: 38 - 40 - 42 - 44 -46 - 48 - 50 (+/-5cm)
- unisex: XS - S - M - L - XL - XXL - XXXL (+/-5cm)
- child: 4a -6a -8a -10a - 12a - 14a (+/-5cm)

FEATURES:

- Fully seam-sealed
- Breathable Taffeta nylon lining
- Removable suspenders (man and woman)
- Cordura reinforced lower pant area
- Built-in ankle gaiter to keep snow out
- Articulated knee
- Adjustable waistband
- Two side pockets
- Two cargo pockets
- One rear pocket
- Ankle zippers

OPTIONS:

- Insulation 100 grams
- NO insulation
- Internal leg thigh zip (**10,00€ + tax** , minimum 10 pieces)
- all print fabric(€)

PANT

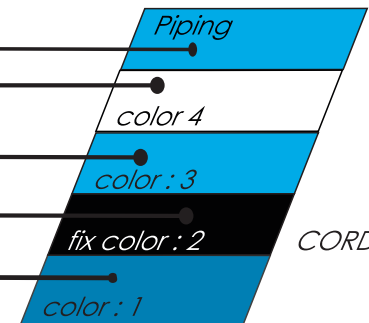
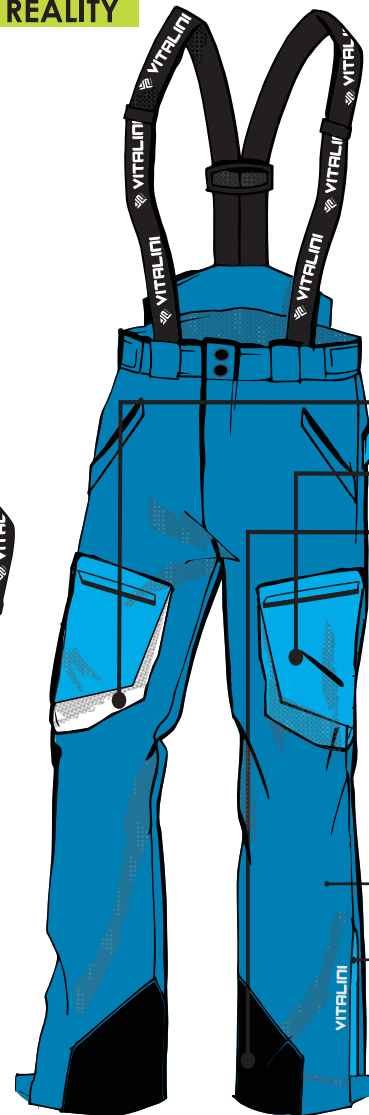
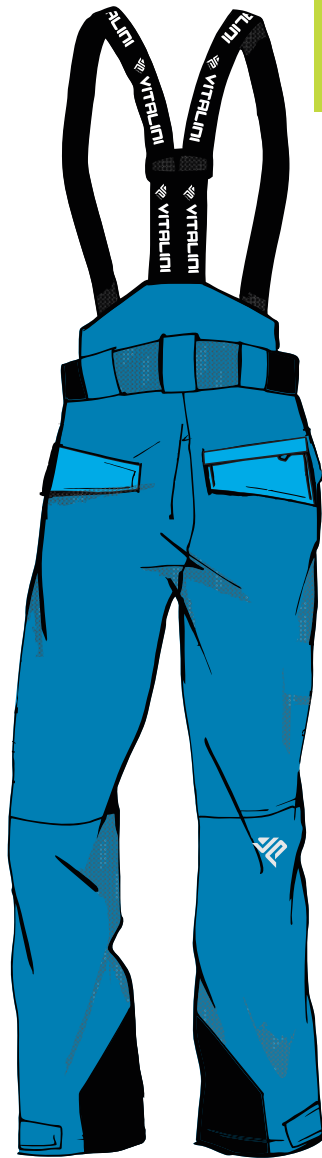


Vp 6632

SIDE ZIP

LOGOS NOT INCLUDED
IN THE PRICE QUOTATION

THE COLORS IN THE
VIDEO AND TO PAPER ARE
DIFFERENT FROM REALITY



CORDURA NERA

possible texture



Polyester Toray






INSULATION:



80 grams

Sizes :

size table:

-  woman: 38 - 40 - 42 - 44 - 46 - 48 - 50 (+/-5cm)
-  unisex: XS - S - M - L - XL - XXL - XXXL (+/-5cm)
-  child: 4a - 6a - 8a - 10a - 12a - 14a (+/-5cm)

FEATURES:

- Fully seam-sealed
- Breathable Taffeta nylon lining
- Removable suspenders (man and woman)
- Cordura reinforced lower pant area
- Built-in ankle gaiter to keep snow out
- Articulated knee
- Adjustable waistband
- Two side pockets
- Two cargo pockets
- One rear pocket
- Full length side zippers

OPTIONS:

- Insulation 100 grams
- NO insulation
- Internal leg thigh zip (**10,00€ + tax** , minimum 10 pieces)
- all print fabric(€)

PANT



Vp 640

SLIM FIT

LOGOS NOT INCLUDED
IN THE PRICE QUOTATION

THE COLORS IN THE
VIDEO AND TO PAPER ARE
DIFFERENT FROM REALITY



fix color : 2

CORDURA NERA

color : 1

BLACK

possible texture





INSULATION:



80 grams

Sizes :

size table:

-  woman: 38 - 40 - 42 - 44 - 46 - 48 - 50 (+/-5cm)
 unisex: XS - S - M - L - XL - XXL - XXXL (+/-5cm)

FEATURES:

- Fully seam-sealed
- Breathable Taffeta nylon lining
- Removable suspenders
- Cordura reinforced lower pant area
- Built-in ankle gaiter to keep snow out
- Articulated knee
- Adjustable waistband
- Two side pockets
- Two cargo pockets
- One rear pocket
- Full length side zippers

OPTIONS:

- Insulation 100 grams
- NO insulation

PANT

PRINT ON SHAPE


 Vp 642
 SIDE ZIP



LE COLORAZIONI A VIDEO
E A CARTACEO SONO
DIFFERENTI DALLA REALTA'



CORDURA NERA

possible texture



Polyester Toray






INSULATION:



80 grams

Sizes :

size table:

-  woman: 38 - 40 - 42 - 44 - 46 - 48 - 50 (+/-5cm)
-  unisex: XS - S - M - L - XL - XXL - XXXL (+/-5cm)
-  child: 4a - 6a - 8a - 10a - 12a - 14a (+/-5cm)

FEATURES:

- Fully seam-sealed
- Breathable Taffeta nylon lining
- Removable suspenders
- Cordura reinforced lower pant area
- Built-in ankle gaiter to keep snow out
- Articulated knee
- Adjustable waistband
- Two side pockets
- One rear pocket
- Full length side zippers
- Snow gaiter

OPTIONS:

- Insulation 100 grams
- NO insulation

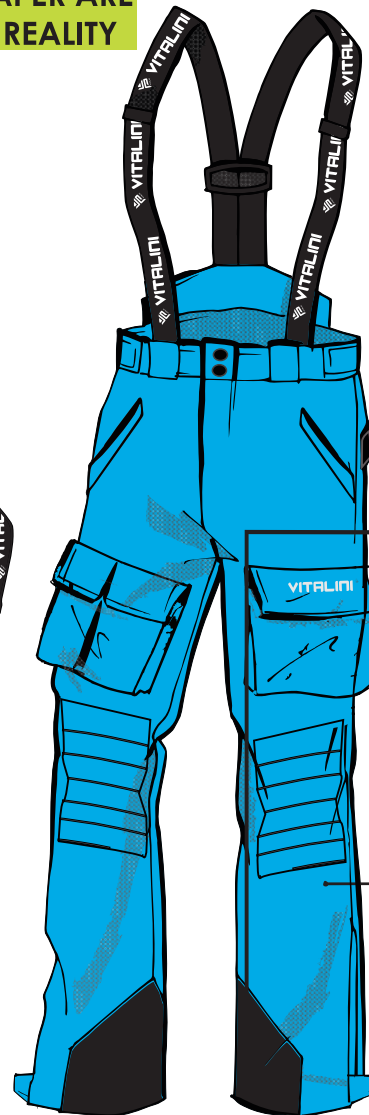
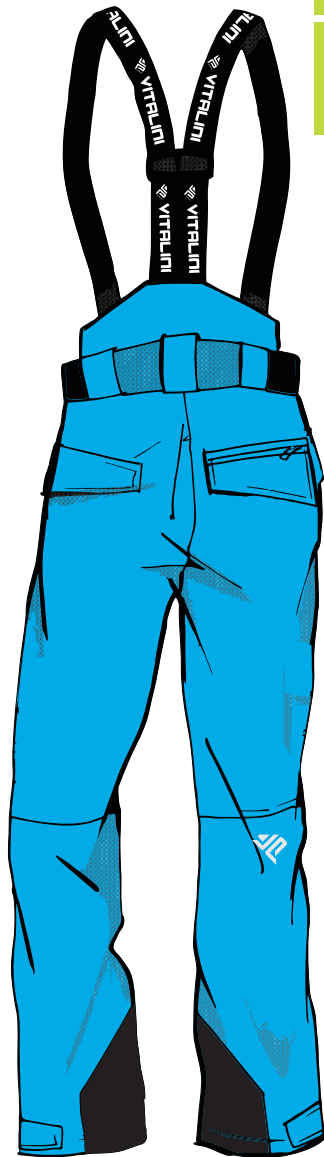
PANT COACH



Vp 6628

LOGOS NOT INCLUDED
IN THE PRICE QUOTATION

THE COLORS IN THE
VIDEO AND TO PAPER ARE
DIFFERENT FROM REALITY



CORDURA NERA

possible texture



Polyester Toray





INSULATION:



80 grams

Sizes :

size table:

-  woman: 38 - 40 - 42 - 44 -46 - 48 - 50 (+/-5cm)
-  unisex: XS - S - M - L - XL - XXL - XXXL (+/-5cm)

FEATURES:

- Fully seam-sealed
- Breathable Taffeta nylon lining
- Removable suspenders
- Cordura reinforced lower pant area
- Built-in ankle gaiter to keep snow out
- Articulated knee
- Adjustable waistband
- Two side pockets
- Three cargo pockets
- One rear pocket
- Internal leg thigh zip
- Anti-shock knee protection
- Snow gaiter

OPTIONS:

- Insulation 100 grams
- NO insulation
- all print fabric(€)
- remove padded knee pads

PANT

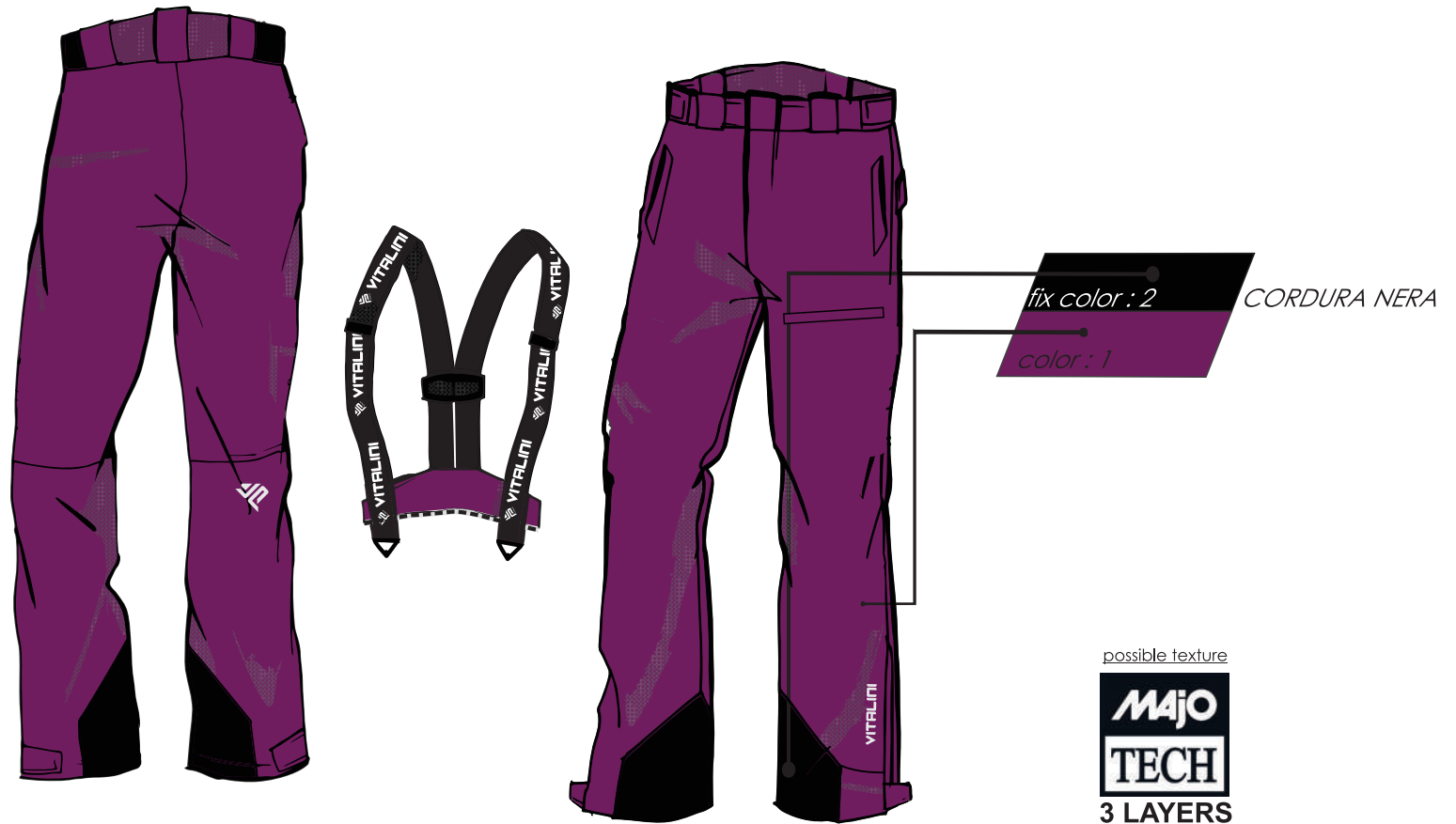
3 LAYERS



Vp 636
SIDE ZIP

LOGOS NOT INCLUDED
IN THE PRICE QUOTATION



THE COLORS IN THE
VIDEO AND TO PAPER ARE
DIFFERENT FROM REALITY



3 LAYERS
No insulation

Sizes :

size table:

-  woman: 38 - 40 - 42 - 44 - 46 - 48 - 50 (+/-5cm)
 unisex: XS - S - M - L - XL - XXL - XXXL (+/-5cm)

FEATURES:

- Completely heat-sealed
- Nylon Tafeta lining breathable
- Bottom pants with reinforcement in cordura
- 1 left pocket with zip on thigh
- Detachable suspenders
- Anti-snow gaiter
- Pre-shaped knees
- leg zip
- 3 layers - not stuffed
- side zip, along the whole leg
- elastic waist

OPTIONS:

PANT


 Vp 6624

LOGOS NOT INCLUDED
IN THE PRICE QUOTATION

THE COLORS IN THE
VIDEO AND TO PAPER ARE
DIFFERENT FROM REALITY



CORDURA NERA

possible texture






INSULATION:



80 grams

Sizes :

size table:

-  woman: 38 - 40 - 42 - 44 - 46 - 48 - 50 (+/-5cm)
-  unisex: XS - S - M - L - XL - XXL - XXXL (+/-5cm)
-  child: 4a - 6a - 8a - 10a - 12a - 14a (+/-5cm)

FEATURES:

- Fully seam-sealed
- Breathable Taffeta nylon lining
- Removable suspenders
- Cordura reinforced lower pant area
- Built-in ankle gaiter to keep snow out
- Articulated knee
- Adjustable waistband
- Two side pockets
- One rear pocket
- Ankle zippers
- Snow gaiter

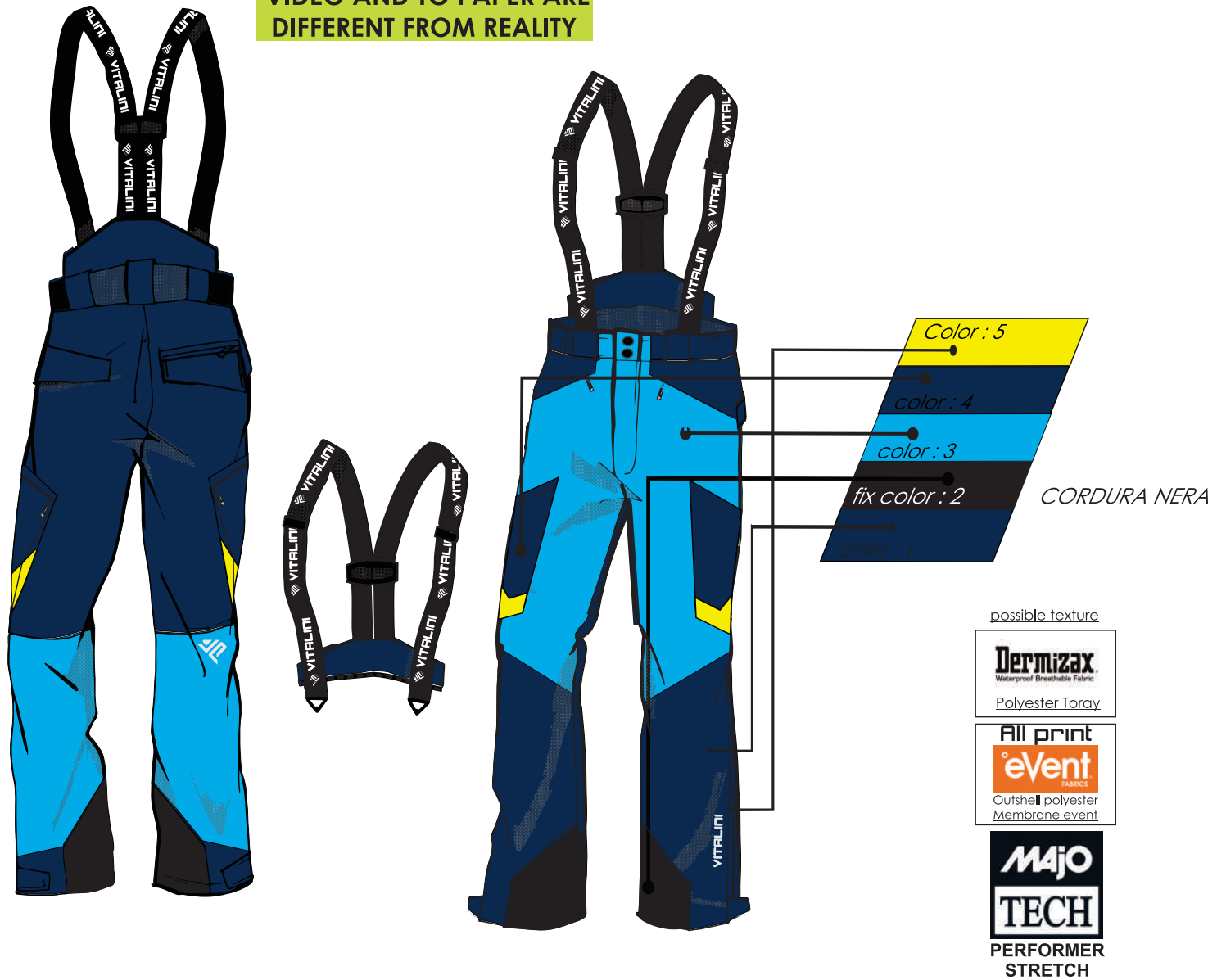
OPTIONS:

- Insulation 100 grams
- NO insulation
- Internal leg thigh zip (10,00€ + tax , minimum 10 pieces)
- all print fabric(€)

PANT


 Vp 638

**LOGOS NOT INCLUDED
IN THE PRICE QUOTATION**
**THE COLORS IN THE
VIDEO AND TO PAPER ARE
DIFFERENT FROM REALITY**





INSULATION:



80 grammi

Sizes :

size table:

-  woman: 38 - 40 - 42 - 44 - 46 - 48 - 50 (+/-5cm)
-  unisex: XS - S - M - L - XL - XXL - XXXL (+/-5cm)

FEATURES:

- Fully heat-sealed
- Breathable Tafeta Nylon lining
- Detachable braces (only for men and women)
- Bottom trousers with reinforcement in cordura
- Snow gaiter
- Preformed knees
- Waist adjustment
- two side cargo pockets with zip
- Two side pockets
- A back pocket
- Zip at the bottom of the leg
- internal thigh ventilation zip

OPTIONS:

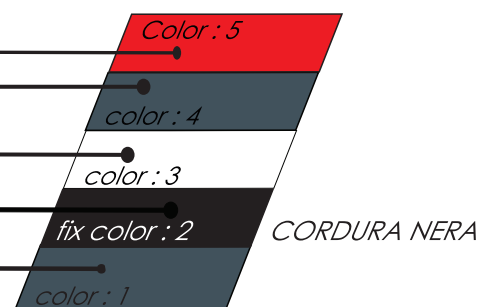
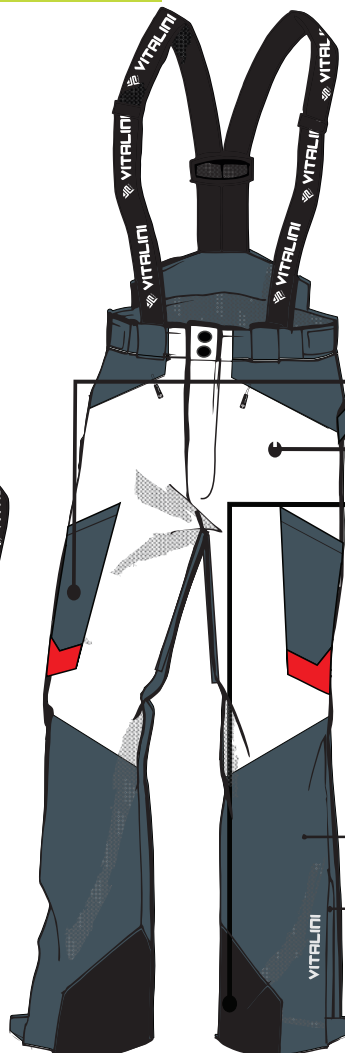
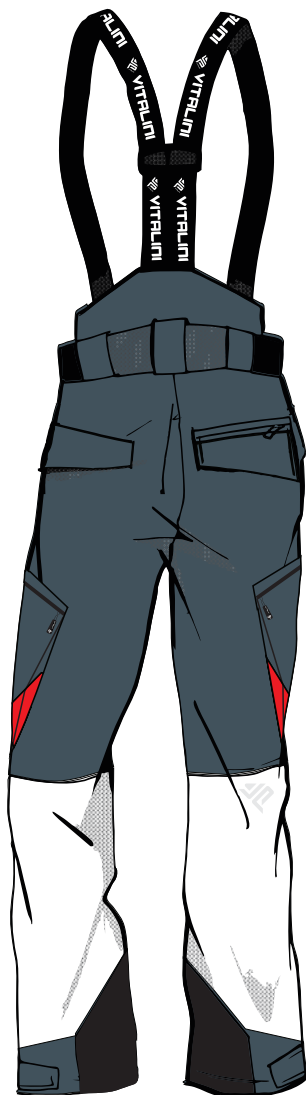
- Insulation 100 grams
- NO insulation- all print fabric(**see pricelist**)
- fabric performer stretch(**see pricelist**)
- print on shape only in part 3 (**see pricelist**)

PANT

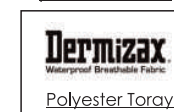

Vp 639
SNOWBOARD
ADDICTED

LOGOS NOT INCLUDED
IN THE PRICE QUOTATION

THE COLORS IN THE
VIDEO AND TO PAPER ARE
DIFFERENT FROM REALITY



possible texture



Polyester Toray



PERFORMER
STRETCH

INSULATION:



80 grammi

Taglie :

size table:



unisex: XXS - XS - S - M - L - XL - XXL - XXXL (+/- 5cm)

FEATURES:

- Fully heat-sealed
- Breathable Tafeta Nylon lining
- Detachable braces (only for men and women)
- Bottom trousers with reinforcement in cordura
- Snow gaiter
- Preformed knees
- Waist adjustment
- two side cargo pockets with zip
- Two side pockets
- A back pocket
- Zip at the bottom of the leg
- internal thigh ventilation zip

OPTIONS:

- Insulation 100 grams
- NO insulation- all print fabric(see pricelist)
- fabric performer stretch(see pricelist)
- print on shape only in part 3 (see pricelist)

KINDER KIT

Variante 1: ORANGE-BLACK



KID: 1(4a/6a) - 2(8a/10a) - 3(12a/14a)

Vp 901

LOGOS NOT INCLUDED
IN THE PRICE QUOTATION

THE COLORS IN THE
VIDEO AND TO PAPER ARE
DIFFERENT FROM REALITY



FEATURES:

- 10.000mm water clones
- 8.000grs breathability
- Zip SBS
- 100% polyester

Jacket:

- . 3 external pockets + 1 post ski pass on the arm
- . One internal zip pocket and two mesh pockets
- . Internal throw
- . Fixed hood
- . Internal tie rods to shorten the sleeves
- . Internal drawstring with adjustment in the pockets

FEATURES:

- 10.000mm water clones
- 8.000grs breathability
- Zip SBS
- 100% polyester

Pantalone:

- . shaped for better comfort
- . two zip pockets
- . Throw bottom leg
- . Internal tie rods to shorten trousers
- . detachable braces
- . belt loops

KINDER KIT

Vp 901

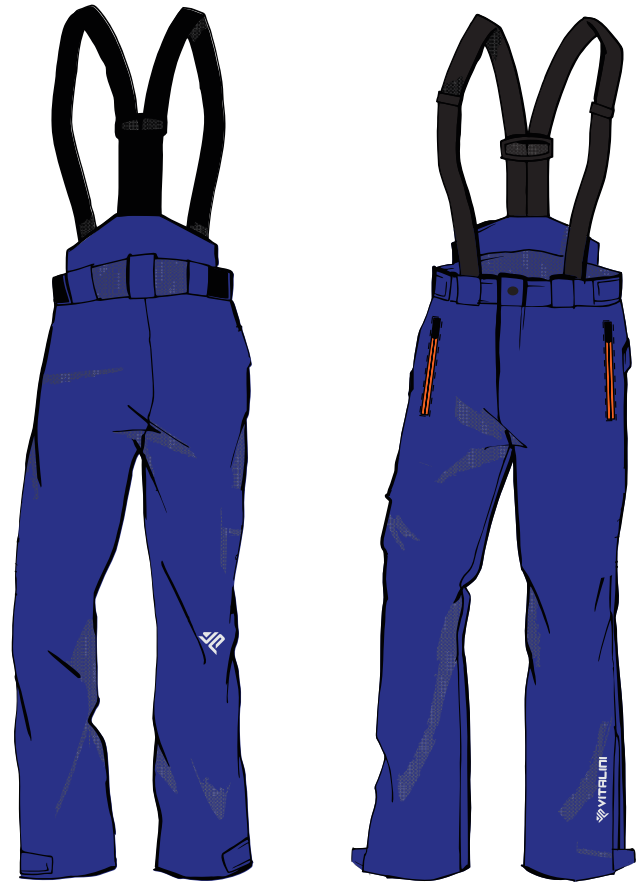
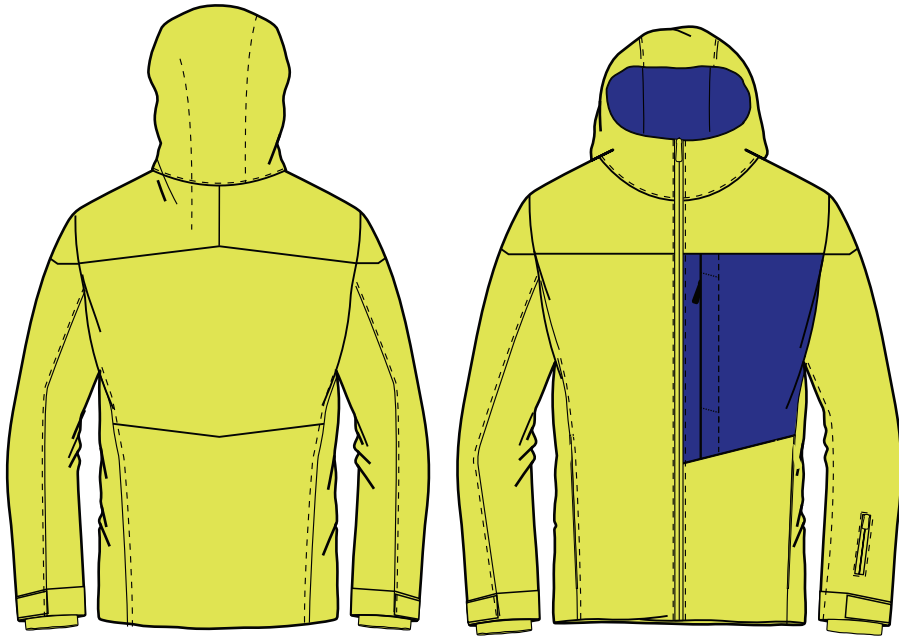
Variante 2: LIMONCELLO-CAPRI



KID: 1(4a/6a) - 2(8a/10a) - 3(12a/14a)

LOGOS NOT INCLUDED
IN THE PRICE QUOTATION

THE COLORS IN THE
VIDEO AND TO PAPER ARE
DIFFERENT FROM REALITY



FEATURES:

- 10.000mm water clones
- 8.000grs breathability
- Zip SBS
- 100% polyester

Jacket:

- . 3 external pockets + 1 post ski pass on the arm
- . One internal zip pocket and two mesh pockets
- . Internal throw
- . Fixed hood
- . Internal tie rods to shorten the sleeves
- . Internal drawstring with adjustment in the pockets

FEATURES:

- 10.000mm water clones
- 8.000grs breathability
- Zip SBS
- 100% polyester

Pantalone:

- . shaped for better comfort
- . two zip pockets
- . Throw bottom leg
- . Internal tie rods to shorten trousers
- . detachable braces
- . belt loops

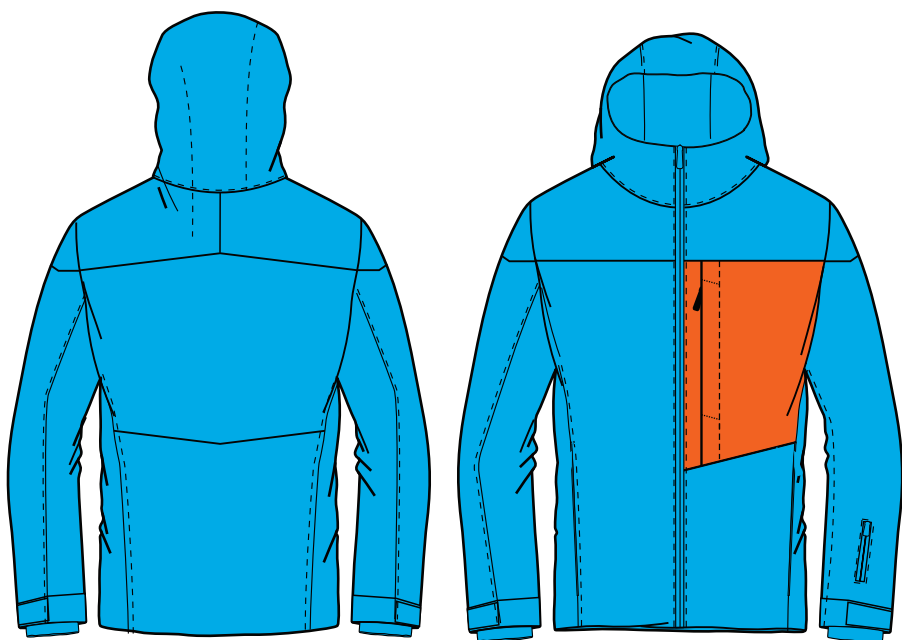
KINDER KIT

Vp 901

Variante 3: AZZURRO-ORANGE  KID: 1(4a/6a) - 2(8a/10a) - 3(12a/14a)

LOGOS NOT INCLUDED
IN THE PRICE QUOTATION

THE COLORS IN THE
VIDEO AND TO PAPER ARE
DIFFERENT FROM REALITY



FEATURES:

- 10.000mm water clones
- 8.000grs breathability
- Zip SBS
- 100% polyester

Jacket:

- . 3 external pockets + 1 post ski pass on the arm
- . One internal zip pocket and two mesh pockets
- . Internal throw
- . Fixed hood
- . Internal tie rods to shorten the sleeves
- . Internal drawstring with adjustment in the pockets

FEATURES:

- 10.000mm water clones
- 8.000grs breathability
- Zip SBS
- 100% polyester

Pantalone:

- . shaped for better comfort
- . two zip pockets
- . Throw bottom leg
- . Internal tie rods to shorten trousers
- . detachable braces
- . belt loops

INSULATOR JACKET

 Vp 106

LOGOS NOT INCLUDED
IN THE PRICE QUOTATION

THE COLORS IN THE
VIDEO AND TO PAPER ARE
DIFFERENT FROM REALITY



Minimum 25
pieces for
colored zip:

color : 2

color : 1

possible texture






INSULATION:



100 grams

Taglie :

size table:

-  donna: 38 - 40 - 42 - 44 - 46 - 48 - 50
-  unisex: XS - S - M - L - XL - XXL - XXXL
-  bambino: 4a - 6a - 8a - 10a - 12a - 14a

FEATURES:

- Jacket with stitching
- Two pockets to the waist
- 1 internal pockets
- Left arm ski pass pocket
- drawstring at the bottom of the jacket
- personalization only in embroidery or patch

OPTIONS:

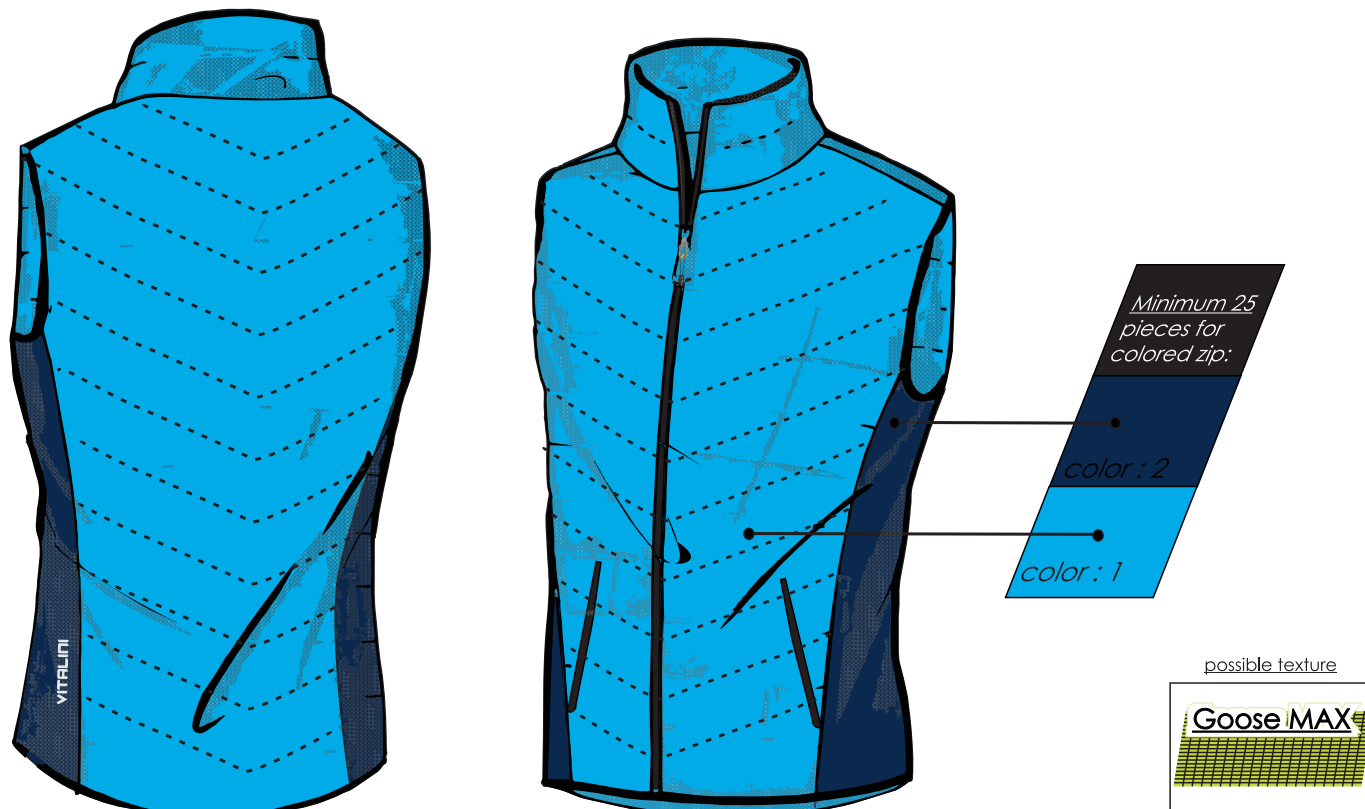
- all print fabric(See pricelist)
- Hood addition (10,00€ + tax, minimum 10 pieces)
- colored zip (minimum 25 pieces)
- Colors side panels in sublimated print

WARM UP TRAINING VEST

 Vp 107

LOGOS NOT INCLUDED
IN THE PRICE QUOTATION

THE COLORS IN THE
VIDEO AND TO PAPER ARE
DIFFERENT FROM REALITY






INSULATION:



100 grammi

Taglie :

size table:

-  donna: 38 - 40 - 42 - 44 - 46 - 48 - 50
-  unisex: XS - S - M - L - XL - XXL - XXXL
-  bambino: 4a - 6a - 8a - 10a - 12a - 14a

FEATURES:

- Jacket with stitching
- Two pockets to the waist
- 1 internal pockets
- drawstring at the bottom of the jacket
- personalization only in embroidery or patch

OPTIONS:

- all print fabric(€)
- Hood addition (10,00€ + tax, minimum 10 pieces)
- Colored zip (minimum 25 pieces)
- Colors side panels in sublimated print

SOFT SHELL VEST

 Vp 151

LOGOS NOT INCLUDED
IN THE PRICE QUOTATION

THE COLORS IN THE
VIDEO AND TO PAPER ARE
DIFFERENT FROM REALITY



*Minimum 25
pieces for
colored zip:*




color : 1

possible texture



Sizes :

size table:

-  woman: 38 - 40 - 42 - 44 - 46 - 48 - 50
-  unisex: XS - S - M - L - XL - XXL - XXXL
-  child: 4a - 6a - 8a - 10a - 12a - 14a

FEATURES:

- 2 side pockets
- Two-way stretch
- Inverted zippers to keep the wind out
- blizzard fabric

OPTIONS:

- All print fabric (**see pricelist**)
- Colored zip (minimum 25 pieces)
- print on shape (**25,00€ + tax**)

SOFT SHELL

 Vp 9106

LOGOS NOT INCLUDED
IN THE PRICE QUOTATION

THE COLORS IN THE
VIDEO AND TO PAPER ARE
DIFFERENT FROM REALITY



INSULATION:



100 grams

Sizes :

size table:



unisex: XS - XS - S - M - L - XL - XXL - XXXL



child: 6a - 8a - 10a - 12a - 14a

FEATURES:

- Jacket with stitching
- detachable sleeves
- Two pockets at the waist
- 1 inside pockets
- Left arm ski pass pocket
- color 2 only in soft shell black color
- personalization only in embroidery or patch

OPTIONS:

- Goose max textile only in colors:
 - Royal
 - black
 - Green Fluo
 - red

SOFT SHELL

ALPINE SKI

 Vp 6113




LOGOS NOT INCLUDED
IN THE PRICE QUOTATION

THE COLORS IN THE
VIDEO AND TO PAPER ARE
DIFFERENT FROM REALITY



Sizes :

size table:

-  woman: 38 - 40 - 42 - 44 - 46 - 48 - 50
-  unisex: XS - S - M - L - XL - XXL - XXXL
-  child: 4a - 6a - 8a - 10a - 12a - 14a

FEATURES:

- 2 side pockets
- One chest pocket
- Two-way stretch
- Articulated elbow
- Inverted zippers to keep the wind out
- Hood
- Left arm ski pass pocket
- neck with partial and back pilling in normal fabric

OPTIONS:

- «print on shape» fabric (**see pricelist**)
- Colored zip (minimum 25 pieces)

SOFT SHELL

ALPINE SKI

 Vp 6114

LOGOS NOT INCLUDED
IN THE PRICE QUOTATION

THE COLORS IN THE
VIDEO AND TO PAPER ARE
DIFFERENT FROM REALITY



Minimum 25
pieces for
colored zip:




color: 1

possible texture



Sizes :

size table:

-  woman: 38 - 40 - 42 - 44 - 46 - 48 - 50
-  unisex: XS - S - M - L - XL - XXL - XXXL
-  child: 4a - 6a - 8a - 10a - 12a - 14a

FEATURES:

- 2 side pockets
- One chest pocket
- Two-way stretch
- Articulated elbow
- Inverted zippers to keep the wind out
- Left arm ski pass pocket
- neck with partial and back pilling in normal fabric

OPTIONS:

- «print on shape» fabric (**see pricelist**)
- Colored zip (minimum 25 pieces)

SOFT SHELL

ALPINE SKI


 Vp 120

LOGOS NOT INCLUDED
IN THE PRICE QUOTATION

THE COLORS IN THE
VIDEO AND TO PAPER ARE
DIFFERENT FROM REALITY



Minimum 25
pieces for
colored zip:

color 2




color : 1

possible texture



Sizes :

size table:

-  woman: 38 - 40 - 42 - 44 - 46 - 48 - 50
-  unisex: XS - S - M - L - XL - XXL - XXXL
-  child: 4a - 6a - 8a - 10a - 12a - 14a

FEATURES:

- 2 side pockets
- One chest pocket
- Two-way stretch
- Articulated elbow
- Inverted zippers to keep the wind out
- ski pass pocket
- neck with partial and back pilling in normal fabric

OPTIONS:

- Colored zip (minimum 25 pieces)

SOFT SHELL

VP 211

LOGOS NOT INCLUDED
IN THE PRICE QUOTATION

THE COLORS IN THE
VIDEO AND TO PAPER ARE
DIFFERENT FROM REALITY



Minimum 25
pieces for
colored zip:

color : 1

possible texture



Sizes:

size table:



unisex : S - M - L - XL - XXL - XXXL

child : 4a - 6a - 8a - 10a - 12a - 14a

FEATURES:

- Two-way stretch
- Length to just below knee
- Inverted zippers to keep the wind out

OPTIONS:

- Colored zip (minimum 25 pieces)

SOFT SHELL

THE COLORS IN THE VIDEO AND TO PAPER ARE DIFFERENT FROM REALITY






Minimum 25 pieces for colored zip:
color: 1

possible texture



Sizes :

size table:

-  woman: 38 - 40 - 42 - 44 - 46 - 48 - 50
-  unisex: XS - S - M - L - XL - XXL - XXXL
-  child: 4a - 6a - 8a - 10a - 12a - 14a

FEATURES:

- 2 side pockets
- One chest pocket
- Two-way stretch
- Articulated elbow
- Inverted zippers to keep the wind out
- Back and full sleeves constructed with super-breathable Blizzart material
- available only in print on shape fabric
-

OPTIONS:

- Colored zip (minimum 25 pieces)

SOFT SHELL

CROSS COUNTRY

 Vp 6241

LOGOS NOT INCLUDED
IN THE PRICE QUOTATION

THE COLORS IN THE
VIDEO AND TO PAPER ARE
DIFFERENT FROM REALITY



Sizes :

size table:



unisex : S - M - L - XL - XXL - XXXL

child : 4a - 6a - 8a - 10a - 12a - 14a

FEATURES:

- bi-stretch
- preforming knees
- lightning reversed to guarantee wind resistance
- pants bottom flash in the thigh
- fabric back in Blizzard (super breathable)
- elastic waistband with drawstring

OPTIONS:

- «print on shape» fabric (**see pricelist**)
- Colored zip (minimum 25 pieces)

SPEED ONE

TRAINING BODY

♂ ♀ 👶 Vp 128

THE COLORS IN THE VIDEO AND TO PAPER ARE DIFFERENT FROM REALITY



possible texture



Sizes:

size table:

♂ ♀ M - L - XL - XXL - XXXL
👶 XXXS - XXS - XS - S



FEATURES:

- Stretch Zip for perfect fit
- Customizable design only in front and back padded area
- Realized with state-of-the-art, non-allergenic, dermatologically tested and environment friendly materials
- 1 zip chest and 2 zip leg
- one Inside zip pocket and one inside open pocket



OPTIONS:

RACE SUIT

ALPINE SKI


 Vp 38 speed 


 Vp 48 


 Vp 58 

THE COLORS IN THE VIDEO AND TO PAPER ARE DIFFERENT FROM REALITY





possible texture



Sizes :

size table:


 S - M - L - XLJ - XL - XXL - XXXL

 XXXS - XXS - XS - SJ - MJ - LJ

FEATURES:



- Ergonomic cut for better fit and comfort
- Stretch zip
- Anti-slip elastic
- Fully Print on shape
- shaped inside cover zip with ski pass pocket, so to stop cold air to protect your belly

OPTIONS:



- Double slider zip
- Anti-cut reinforcements on request in the parts exposed to the cuts of the foils or hooks of the boots. (15,00€ + tax)

RACE SUIT

ALPINE SKI


 Vp 36 speed 


 Vp 46 


 Vp 56 

THE COLORS IN THE VIDEO AND TO PAPER ARE DIFFERENT FROM REALITY





Possible textile



Sizes :

size table:


 S - M - L - XLJ - XL - XXL - XXXL

 XXXS - XXS - XS - SJ - MJ - LJ

FEATURES:

- Ergonomic cut for better fit and comfort
- Stretch zip
- Anti-slip elastic
- Fully Print on shape
- shaped inside cover zip with ski pass pocket, so to stop cold air to protect your belly
- protections removable against the impacts of the poles

OPTIONS:

- Double slider zip
- Anti-cut reinforcements on request in the parts exposed to the cuts of the foils or hooks of the boots. (**15,00€ + tax**)

RACE SUIT

CROSS COUNTRY

VP 52

THE COLORS IN THE VIDEO AND TO PAPER ARE DIFFERENT FROM REALITY



possible texture



Sizes :

size table:



woman: 40 - 42 - 44 - 46 - 48 - 50



man: S - M - L - XL - XXL - XXXL



child: 4a - 6a - 8a - 10a - 12a - 14a

FEATURES:

- Ergonomic cut for better fit and comfort
- Stretch zip
- Anti-slip elastic
- Fully Print on shape
- elastic waistband with drawstring
- reversed ZIP

OPTIONS:

SOFT SHELL

JERSEY RACE

♂ ♀ 👶 Vp 51

THE COLORS IN THE VIDEO AND TO PAPER ARE DIFFERENT FROM REALITY



Size:

♂ ♀ 👶 unisex : XS - S - M - L - XL - XXL - XXXL

FEATURES:

- Ergonomic cut for better fit and comfort
- Stretch zip
- Anti-slip elastic
- Fully Print on shape
- elastic waistband with drawstring
- reversed ZIP

OPTIONS:


FLEECE underjacket

— |    Vp 815

THE COLORS IN THE VIDEO AND TO PAPER ARE DIFFERENT FROM REALITY



Size:

   unisex : XS - S - M - L - XL - XXL - XXXL

FEATURES:

- Stretch thermal shirt two layers, outer Lycra and flogger internal fleece, so as to allow an excellent traspiration and a perfect heat retention bodily.
- Fully Print on shape
- Antiallergic fabric
- Nek zip

OPTIONS:

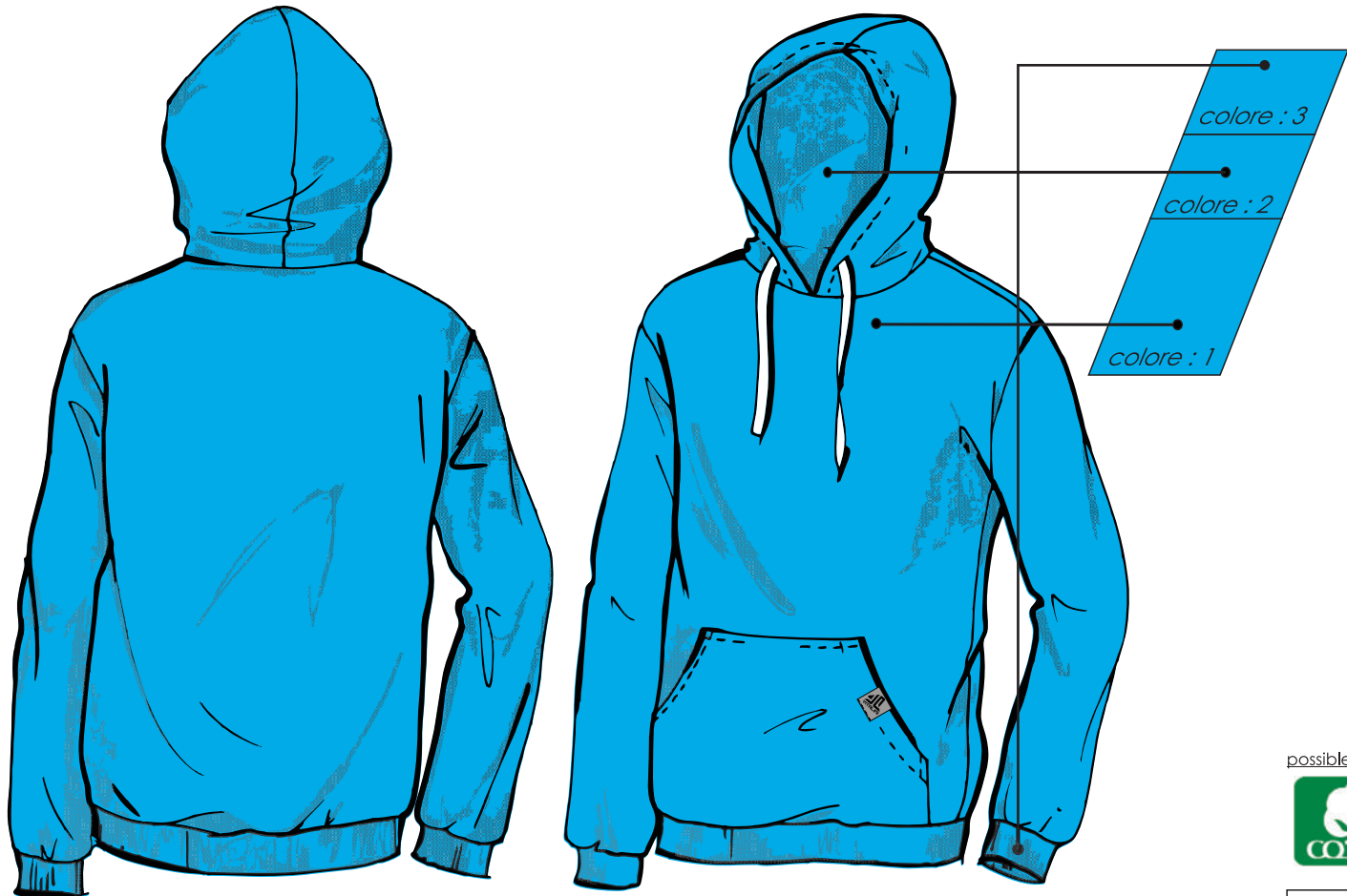
HOODIES

SWEAT WITH HOOD

VP 680

LOGOS NOT INCLUDED
IN THE PRICE QUOTATION

THE COLORS IN THE
VIDEO AND TO PAPER ARE
DIFFERENT FROM REALITY






possible texture



Sizes :

size table:

-  woman: 38 - 40 - 42 - 44 - 46 - 48 - 50
-  unisex : S - M - L - XL - XXL - XXXL
-  child: 4a - 6a - 8a - 10a - 12a - 14a

FEATURES:

- Cotton 280 gr / MQ
- Polyester 250 gr / MQ
- cuffs and sweatshirt bottom with elastic rib

OPTIONS:

- «Print on shape» fabric (POLYESTER FABRIC) (see pricelist)

HOODIES

SWEAT WITH HOOD

VP 681

LOGOS NOT INCLUDED
IN THE PRICE QUOTATION

THE COLORS IN THE
VIDEO AND TO PAPER ARE
DIFFERENT FROM REALITY



possible texture



Sizes :

size table:

- woman: 38 - 40 - 42 - 44 - 46 - 48 - 50
- unisex : S - M - L - XL - XXL - XXXL
- child: 4a - 6a - 8a - 10a - 12a - 14a

FEATURES:

- Cotton 280 gr / MQ
- Polyester 250 gr / MQ
- cuffs and sweatshirt bottom with elastic rib
- front zip
- 3 colors

OPTIONS:

- «Print on shape» fabric (POLYESTER FABRIC) (see pricelist)

HOODIE ICON

VP 686

LOGOS NOT INCLUDED
IN THE PRICE QUOTATION

THE COLORS IN THE
VIDEO AND TO PAPER ARE
DIFFERENT FROM REALITY






possible texture



Sizes :

size table:

-  woman: 38 - 40 - 42 - 44 - 46 - 48 - 50
-  unisex : S - M - L - XL - XXL - XXXL
-  child: 4a - 6a - 8a - 10a - 12a - 14a

FEATURES:

- Cotton 280 gr / MQ
- Polyester 250 gr / MQ
- cuffs and sweatshirt bottom with elastic rib
- 2 colors

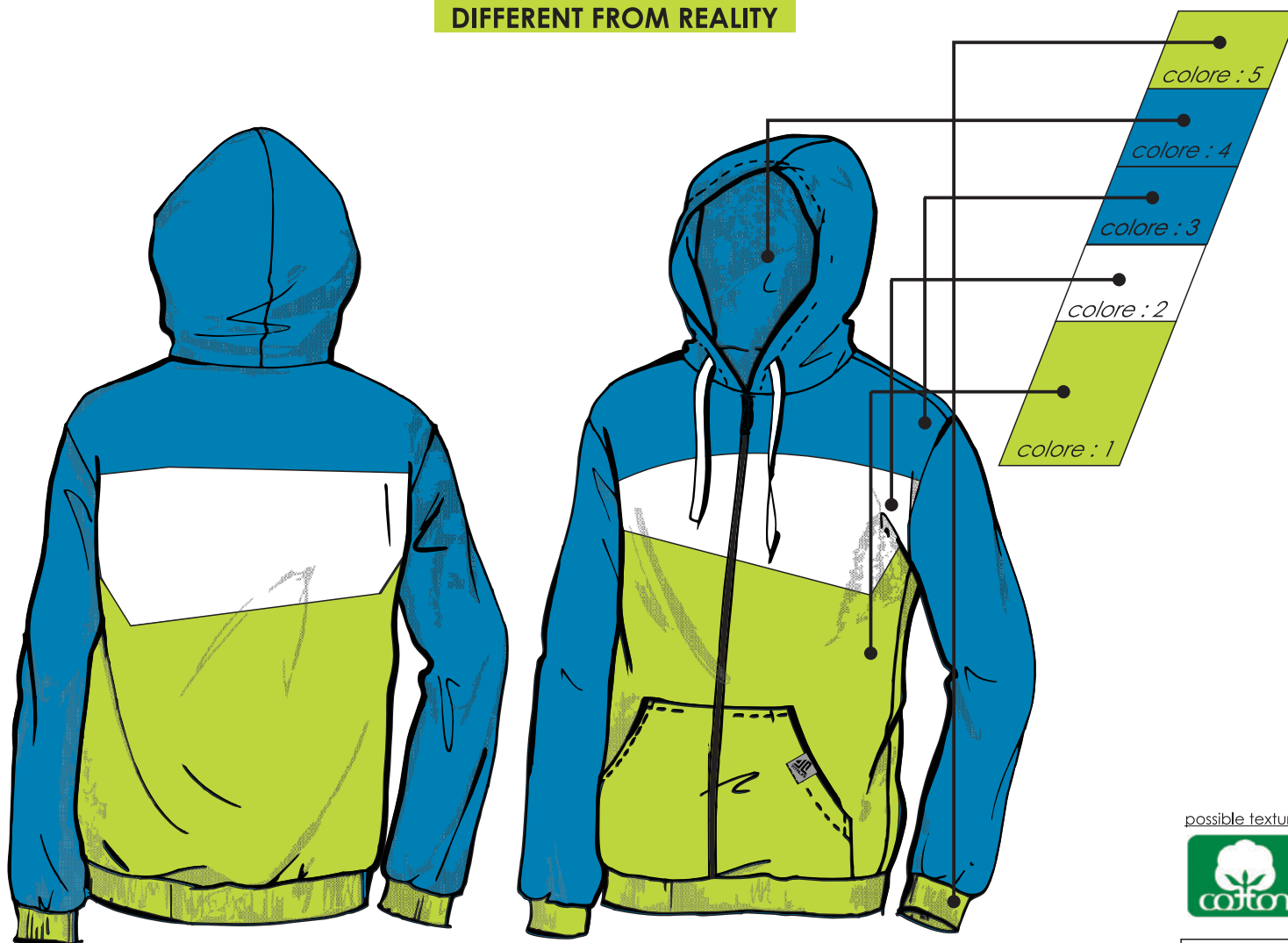
OPTIONS:

HOODIES

SWEAT WITH HOOD

LOGOS NOT INCLUDED
IN THE PRICE QUOTATION

THE COLORS IN THE
VIDEO AND TO PAPER ARE
DIFFERENT FROM REALITY






possible texture



Sizes :

size table:

-  woman: 38 - 40 - 42 - 44 - 46 - 48 - 50
-  unisex : S - M - L - XL - XXL - XXXL
-  child: 4a - 6a - 8a - 10a - 12a - 14a

FEATURES:

- Cotton 280 gr / MQ
- Polyester 250 gr / MQ
- cuffs and sweatshirt bottom with elastic rib
- front zip

OPTIONS:

- «Print on shape» fabric (POLYESTER FABRIC) (see pricelist)

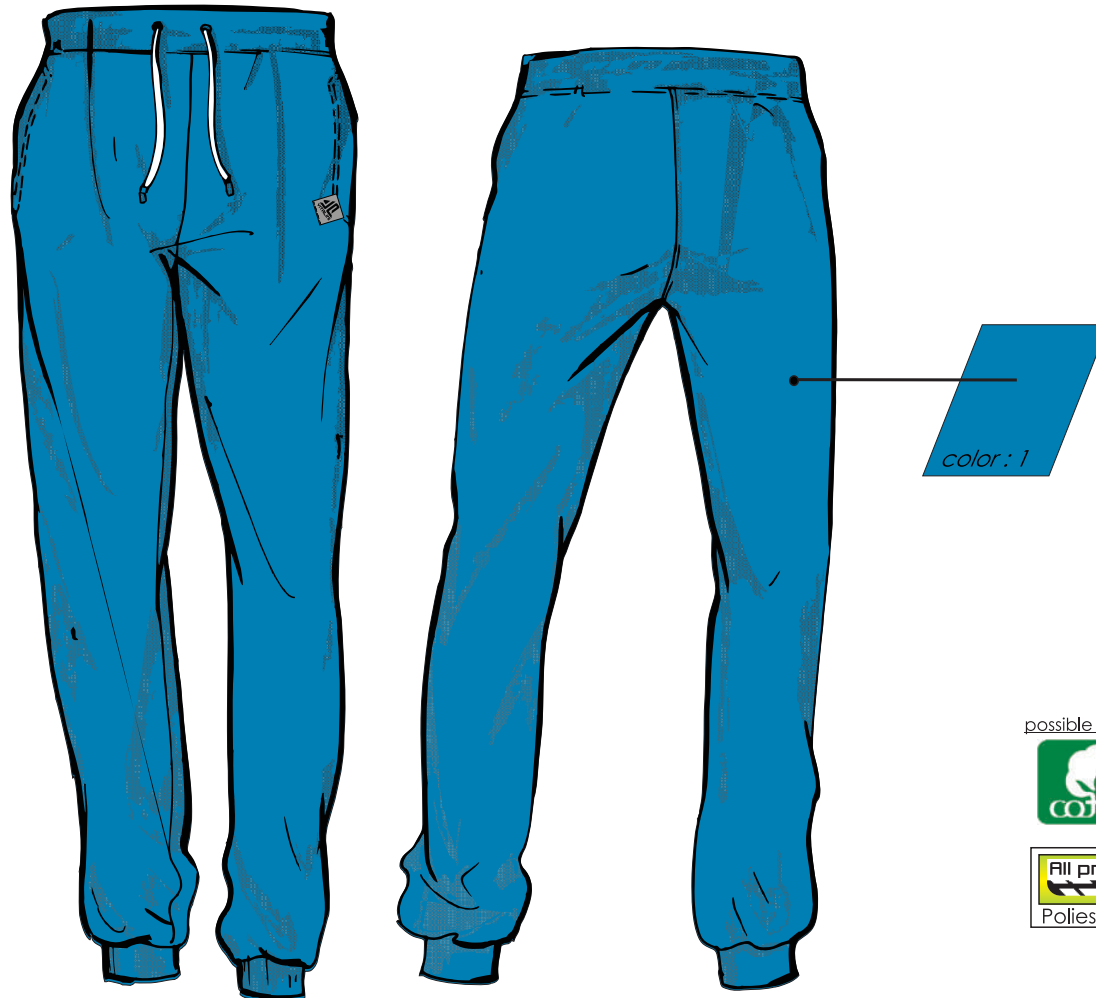
PANT

SWEAT PANT

VP 682

LOGOS NOT INCLUDED
IN THE PRICE QUOTATION

THE COLORS IN THE
VIDEO AND TO PAPER ARE
DIFFERENT FROM REALITY



Sizes :

size table:

- woman: 38 - 40 - 42 - 44 - 46 - 48 - 50
- unisex : S - M - L - XL - XXL - XXXL
- child: 4a - 6a - 8a - 10a - 12a - 14a

FEATURES:

- Cotton trousers
- 2 pockets on the sides
- 1 back pocket
- ribbed waist and ankles elasticated

OPTIONS:

- «Print on shape» fabric (POLYESTER FABRIC) (see pricelist)

PRINTED T-SHIRT

— |    Vp 800

THE COLORS IN THE VIDEO AND TO PAPER ARE DIFFERENT FROM REALITY






possible texture



Sizes :

size table:

-  woman: 38 - 40 - 42 - 44 - 46 - 48 - 50
-  man: XS - S - M - L - XL - XXL - XXXL
-  child: 4a - 6a - 8a - 10a

FEATURES:

- 100% poliestere, micron
- Half sleeve jersey
- Choker
- sublimation printing fabric
- made in italy

OPTIONS:

MIN. 10 PIECES

RUNNING PANT



THE COLORS IN THE VIDEO AND TO PAPER ARE DIFFERENT FROM REALITY



possible texture



Taglie :

size table:



unisex: XS - S - M - L - XL - XXL - XXXL

bambino: 4a -6a - 8a - 10a

FEATURES:

- 100% poliestere
- made in italy

OPTIONS:

- print on shape
- Available in two different lengths

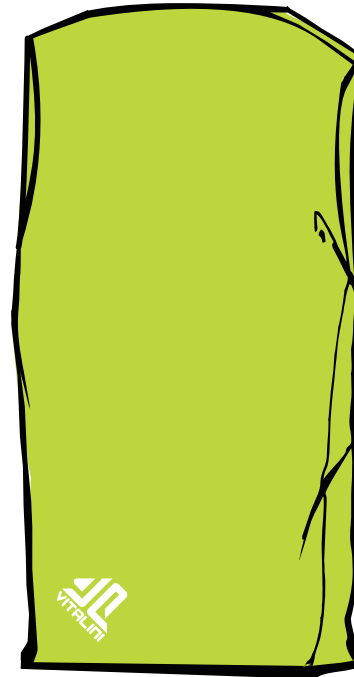
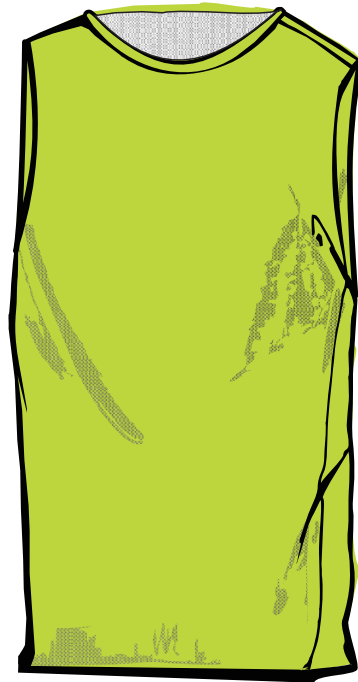
MIN. 10 PIECES

TANK TOP

running print on shape

VP 803

THE COLORS IN THE VIDEO AND TO PAPER ARE DIFFERENT FROM REALITY






possible texture



Taglie :

size table:

-  donna: 38 - 40 - 42 - 44 - 46 - 48 - 50
-  uomo: S - M - L - XL - XXL - XXXL
-  bambino: 4a - 6a - 8a - 10a - 12a - 14a

FEATURES:

- 100% poliestere
- no sleeve
- Choker
- sublimation printing fabric
- made in italy

OPTIONS:

MIN. 10 PIECES

POLO

POLO COTTON

VP 804

THE COLORS IN THE VIDEO AND TO PAPER ARE DIFFERENT FROM REALITY






possible texture



Taglie :

size table:

-  donna: 38 - 40 - 42 - 44 - 46 - 48 - 50
-  uomo: S - M - L - XL - XXL - XXXL
-  bambino: 4a - 6a - 8a - 10a - 12a - 14a

FEATURES:

- 100% COTTON
- Half sleeve jersey
- Short front bottom
- made in italy

OPTIONS:

- long sleeve

MIN. 10 PIECES

BIBS

SKI & SNOWBOARD

VP 95

THE COLORS IN THE VIDEO AND TO PAPER ARE DIFFERENT FROM REALITY



Sizes :

size table:



FEATURES:

- completely customade design

OPTIONS:

THE COLORS IN THE VIDEO AND TO PAPER ARE DIFFERENT FROM REALITY



possible texture



Sizes :

size table:



FEATURES:

- completely customade design

OPTIONS:

BIBS

COVER JACKET IN LYCRA



THE COLORS IN THE VIDEO AND TO PAPER ARE DIFFERENT FROM REALITY



possible texture



Sizes :

size table:



FEATURES:

- completely customade design

OPTIONS:

CAP



Vp 94/1 net

Vp 94/2 fabric

LOGOS NOT INCLUDED
IN THE PRICE QUOTATION

THE COLORS IN THE
VIDEO AND TO PAPER ARE
DIFFERENT FROM REALITY

Cap: **ICON TEAM**
two versions:
1 Completely fabric
2 Net back



Cap: **ICON RAINBOW**
two versions:
1 Completely fabric
2 Net back



Sizes :

size table:



unisex

FEATURES:

- flat visor cap
- Available in classic version or with net

OPTIONS:

MIN 100 PIECES

if completely customazable


MIN 25 PIECES

only for small personalization
from stock

(add embroidery or patches)

BEANIES

JACUARDE BENIES

 Vp 90 beanie
Vp 91 headband

LOGOS NOT INCLUDED
IN THE PRICE QUOTATION

THE COLORS IN THE
VIDEO AND TO PAPER ARE
DIFFERENT FROM REALITY



Sizes :

size table:



FEATURES:

- stocking stitch
- totally customizable in jacuarde


OPTIONS: MIN. 20 PIECES

-Colors available:
Red/BLU/White/Black/
Yellow/Light Blu

For other colors min. 50 pieces,
after checking availability

BEANIES

WORKED KNIT BEANIE

 Vp 92 beanie
Vp 93 headband

LOGOS NOT INCLUDED
IN THE PRICE QUOTATION

THE COLORS IN THE
VIDEO AND TO PAPER ARE
DIFFERENT FROM REALITY



Sizes :

size table:



unisex

FEATURES:

- knit worked
- completely customizable

OPTIONS:
MIN. 20 PIECES

- Colors available:
Red/BLU/White/Black/
Yellow/Light Blu

For other colors min. 50 pieces,
after checking availability

LYCRA HEADBAND



Vp 94/5

headband

THE COLORS IN THE VIDEO AND TO PAPER ARE DIFFERENT FROM REALITY



possible texture



Sizes :

size table:



FEATURES:

- completely customade design

OPTIONS:

MIN. 30 PIECES

THE COLORS IN THE VIDEO AND TO PAPER ARE DIFFERENT FROM REALITY



possible texture



Sizes :

size table:



FEATURES:

- completely customade design

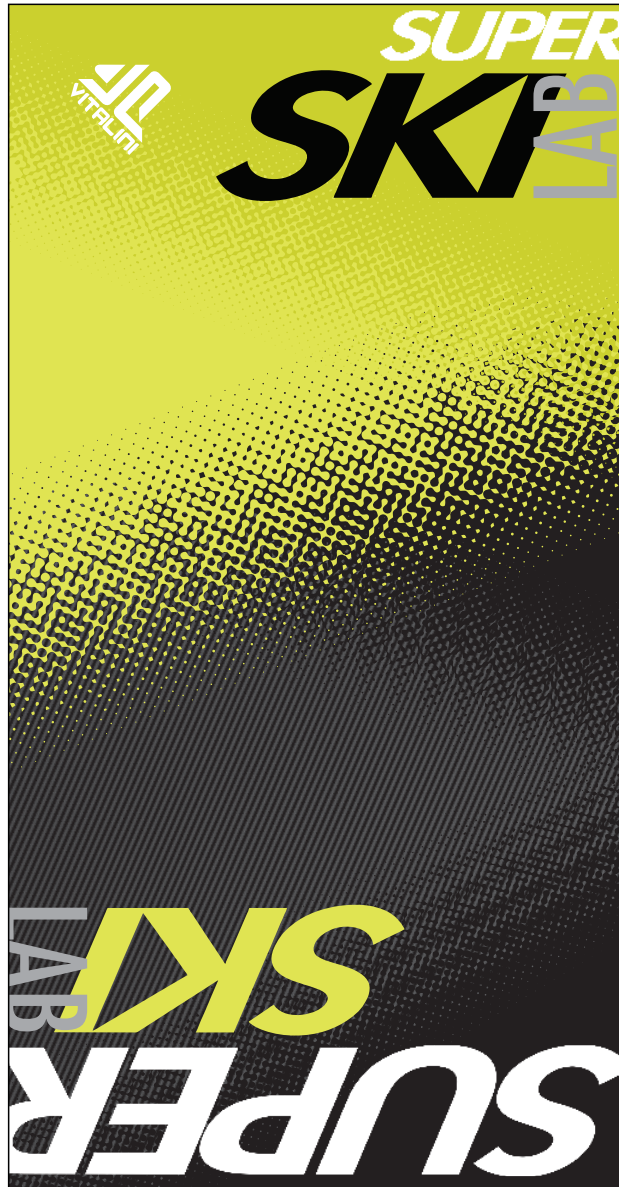
OPTIONS:

MIN. 30 PIECES

neckmask

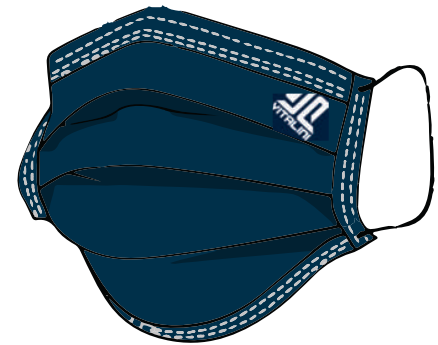
VP 27

THE COLORS IN THE VIDEO AND TO PAPER ARE DIFFERENT FROM REALITY



26/2/1000

X 2



Sizes :

size table:



unisex

FEATURES:

- completely customade design
- inside pocket for protective mask

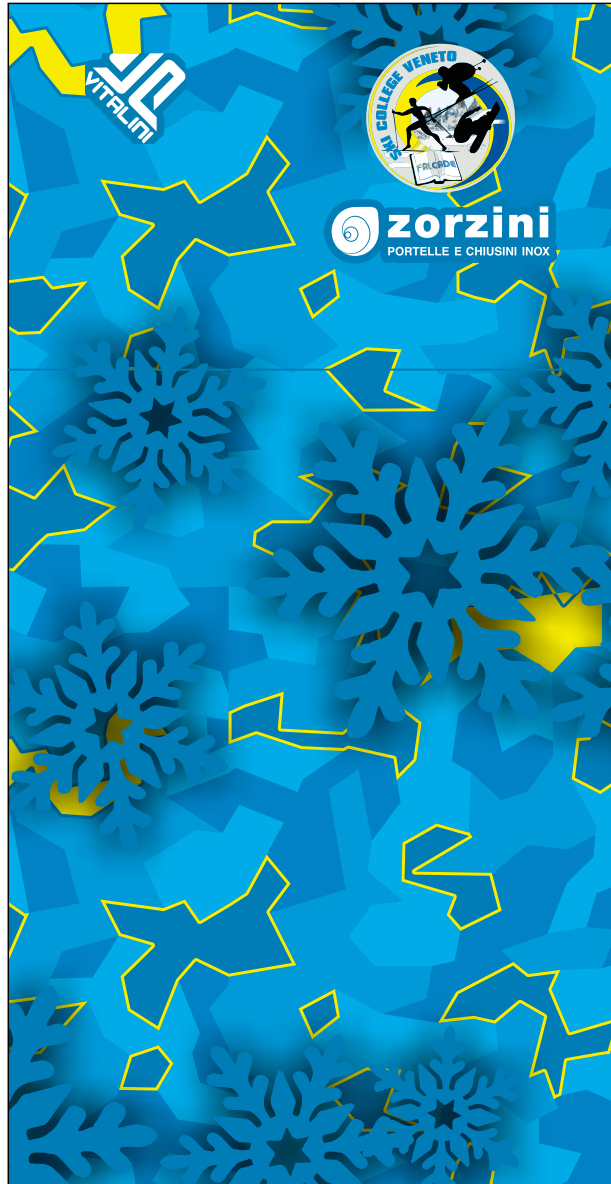
OPTIONS:

MIN. 50 PIECES

NECK WARMER

— |  Vp 28

THE COLORS IN THE VIDEO AND TO PAPER ARE DIFFERENT FROM REALITY



possible texture



Sizes :

size table:



FEATURES:

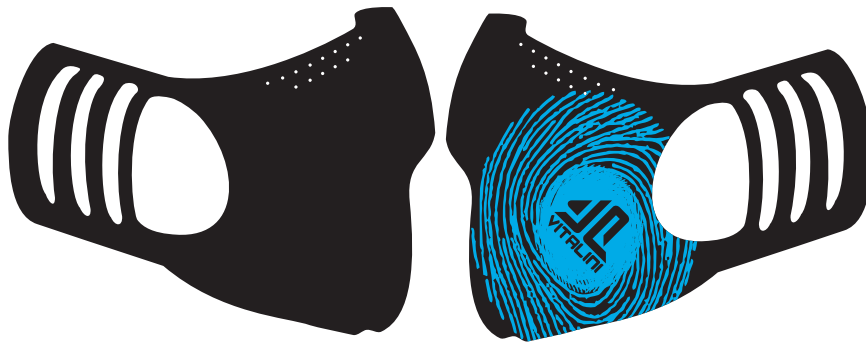
- completely customade design

OPTIONS:

MIN. 30 PIECES

MASK

Vp24



3 LAYER FABRIC

-  Water Repellent and Waterproof
-  Barrier Function
-  Windproof
-  Stretch Fabric

3 Layer Fabric
 Windproof - Waterproof and Barrier function
 Outside layer fabric Water Repellent
 Central layer of fabric is a membrane
TEKSERIES - Barrier Function
 Inside layer Microfiber
 in a way to have better Comfort



Protection: 100% Windproof
 Water Column 10 mt
 Brethability up to 11000 gr/mq/24h

Vp25



CARATERISTIC:

2 layer fabric
 Inside :cotton 130gr/m2
 with Antibacterial and dripless Tratement
 Outside 100% Printed Polyester

Customised Print

Ergonomical Shape

Washable at 60° max 10 washing

each mask will have the words:
 face protection device
 for community use, NOT
 to be considered certified
 and medical device.

MADE IN ITALY

Vp26



Customized Mask Washable and reusable Garantie for 25 washing

The mask is a device for civil use:dust filter, washable.
 The mask wraps around the face with elastic support
 behind the ears.

You can print the company logo on the
 entire surface of the template.

THE PRODUCT IS NOT A MEDICAL PROTECTION

Fabric:
 Oeko Tex certificate no. 1005450.0 class II
 100% Polyester Weight: 110gr / m2
 resistance to surface wetting
 (spray test, UNI EN 24920): 5 (AATCC100)

Guaranteed reusable device for 25 washes at 40 °



It is recommended to iron the mask after each wash
 at low temperature to reactivate the water-repellent treatment.

MADE IN ITALY

HELMET COVER

— |    Vp 600

THE COLORS IN THE VIDEO AND TO PAPER ARE DIFFERENT FROM REALITY



possible texture



Sizes :

size table:



FEATURES:

- completely customade design

OPTIONS:

MIN. 50 PIECES

BACKPACK

Vpz 700 80 litres

Vpz 701 100+20 litres

LOGOS NOT INCLUDED
IN THE PRICE QUOTATION

THE COLORS IN THE
VIDEO AND TO PAPER ARE
DIFFERENT FROM REALITY



FEATURES Vpz 700

- 80 litres
- lightning reversed to guarantee wind resistance
- Front pocket
- Side ski boots pocket
- Side pocket for object
- Upper pocket for helmet
- Separate compartment brings everything
- upper pocket front wall made in velcro for custom personalization

FEATURES Vpz 701

- 100+20 litres
- Adjustable volume zip on backpack lower position
- Lightning reversed to guarantee wind resistance
- Front pocket with additional mech pocket inside
- Side ski boots pocket
- leg and underarm protections side pocket
- Upper pocket for two helmet
- Separate compartment brings everything
- google side pocket
- upper pocket front wall made in velcro for custom personalization

OPTIONS:

- personalization only in transfert or patch
- For a completely personal desing **MIN 150 PIECES**

BACKPACK BIG BAG

Vpz 702 200 litres

LOGOS NOT INCLUDED
IN THE PRICE QUOTATION

THE COLORS IN THE
VIDEO AND TO PAPER ARE
DIFFERENT FROM REALITY



Sizes :

size table:

Vpz 702 200 litres

FEATURES:

- Lightning reversed to guarantee wind resistance
- Zippered pocket on the upper side
- manic places on the sides

OPTIONS:

TROLLEY

+BACK PACK

Vpz 704 90+20 litres

LOGOS NOT INCLUDED
IN THE PRICE QUOTATION

THE COLORS IN THE
VIDEO AND TO PAPER ARE
DIFFERENT FROM REALITY



Sizes :

size table:

FEATURES:

- 2 in 1 trolley/backpack
- Wheels and telescopic handle to facilitate transportation
- pocket with suspenders to let it become a backpack
- Two handles
- Invisible hook on the side to attach the 20 litres daily pack made with 2 compartments , computer inside pocket, 2 outside mesh pocket
- 2 mesh inside pocket
- 2 inside laces to mantein in position the wear

SMALL SAC

|  Vp 96

THE COLORS IN THE VIDEO AND TO PAPER ARE DIFFERENT FROM REALITY



Sizes :

size table:

 one size


FEATURES:

- completely customizable in the graphics (**MIN** 500 pieces)
- SIZE 28 x 40 cm
- Poliester fabric (no Stratch)

OPTIONS:

- Back personalization with transfer

PROTECTION CARBON


 Vp 1000 SHIN
 Vp 1001 ARM

**LOGOS NOT INCLUDED
IN THE PRICE QUOTATION**
**THE COLORS IN THE
VIDEO AND TO PAPER ARE
DIFFERENT FROM REALITY**

**Arm
protection
CARBON**




**Shin
protection
CARBON**



Sizes :

size table:


 leg guard
 Shape 1: 38 cm for racers from 150 to 160 cm
 Shape 1: 40 cm for racers from 160 to 170 cm
 Shape 2: 42 cm for racers from 170 to 180 cm
 Shape 2: 45 cm for racers over 180 cm


 underarm protection:
 LADY 23cm - Man 25cm - Man 27cm.

FEATURES:


VP1000 Carbon leg guard

- . Made with a mix of carbon and glass fibre so to guarantee the maximum resistance on gates impact
- . Different high of racers create a really different impact to gates and its require a different shape of protection so to let the gates felt more inside of the curve and not on the top of the skis, this permit to each racers to maintain the curve line are they thought without any outside influence as gates impact on skis.
- . Inside we use a special high grip mouse so to keep in a perfect position the protection during gate's impact, with different thickness depending from sizes.
- . Laces have double velcro regulation so to fit all type of requested sizes and can be applied on protection in three different position each.

Vp1001 Carbon underarm protection:

- . Made with a mix of carbon and glass fibre so to guarantee the maximum resistance on gates impact.
- . All round protection with a specific cut on the elbow position so to cover and lateral side and leave free the lower part, this solution has been develop so to eliminate the possibility, in case of impact on snow, that the protection move up on the underarm with the risk to brake the wrist.
- . Velcro laces has been positioned so not to block blood circulation and its required to be cut for a personal fit.
- . Inside we use a special high grip mouse so to keep in a perfect position the protection during gate's impact.

PROTECTION PLASTIC

 Vp 1000 SHIN
 Vp 1001 ARM

**LOGOS NOT INCLUDED
 IN THE PRICE QUOTATION**
**THE COLORS IN THE
 VIDEO AND TO PAPER ARE
 DIFFERENT FROM REALITY**

**Arm
protection
PLASTIC**



**Shin
protection
PLASTIC**



Sizes :

size table:



SHIN PROTECTOR: kid e adult

ARM PROTECTOR: unisex

FEATURES:


Vp1000 plastic leg guard:

- . Shape between these two sizes are different because of different technical needing between JR and SR
- . Both of them inside have a double mouse liner, one more focus to impact absorbing and one that create more grip on the leg so to keep better in position the leg guard during impact with gate, these second mouse is something that all our competitor did not think about, but we feel that this is an important plus because plastic is quite soft and during gates impact is deforming a bit its shape moving on the legs, so this solution permit to protection to remain more in correct position.
- . Both of them have two silicon line on the laces so to help again the protection to remain in correct position.
- . The SR version have a system where where the attachment of the laces is covered and inside the protection so as not to damage it in case of direct impact with gates.
- . JR version on the lower part have two liner made so to improve the rigidity of the protection and so to give the possibility to cut them in a way to make them shorter following a correct shape.

VP1001 plastic under arm:

- . One shape with a possibility to cut it on elbow position so to make it shorter, length on this item it is really important in fact in case of fault, it would be better to have them shorter then longer over the elbow otherwise the risk it would be that the protection move up and brake the wrist.
- . As for the plastic leg guard also here we are using a higher grip mouse so to keep them in position during impact.
- . We use two stretch velcro laces in a way to optimise the fitting length from JR to SR with also a system to block them so not to let them get out from the protection when they are unlooked.

PROTECTION

— |  Vp 1005 BACK

LOGOS NOT INCLUDED
IN THE PRICE QUOTATION

THE COLORS IN THE
VIDEO AND TO PAPER ARE
DIFFERENT FROM REALITY

**BACK
protection**



Sizes :

size table:



6/8 - 10/12 - S - M - L - XL/2XL

FEATURES:

Vp1005 back protector:

- . We create this model more specific for racers following the CE rules.
- . We create a system so to have detachable suspenders.
- . The suspenders length is adjustable thanks to the same system used on our ski pants.
- . Waist band is adjustable in up or down position and in length by a simple velcro.
- . we have one zip so to take out the two inside protection mouse so to permit washing the outside liner.
- . Inside we use two different high absorbing shock mouse so to guarantee higher performance in every temperature condition.

PROTECTION

vp 1006 CORSAGE

LOGOS NOT INCLUDED
IN THE PRICE QUOTATION

THE COLORS IN THE
VIDEO AND TO PAPER ARE
DIFFERENT FROM REALITY

CORSAGE
GS



Sizes :

size table:



XXS-XS-S-M-L

FEATURES:

VP1002 Top arm protection:

. This top protection is made by using different textile depending from position and by using different liner of protective mouse in different position (under arm, elbow, arm, from shoulder back shoulder).

. Protections are inside of a pocket so to remove them in case not necessary or in case of out side liner washing.